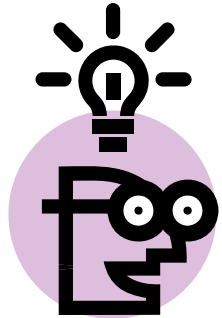


Grow It,



Show It

Know It



At The 2008 Jefferson County Fair

June 25th-30th

Cover designed by:
Brittany McElderry



Iowa State University
Jefferson County Extension
Office
2606 West Burlington
Fairfield, Iowa 52556

Phone 641-472-4166
Fax 641-472-2591

<http://www.extension.iastate.edu/jefferson>

Jefferson County Fair Web Site:
<http://www.greaterjeffersoncountyfair.com>

Hours:
Monday-Friday
8:00 a.m. - 4:30 p.m.

TABLE OF CONTENTS

DIVISION	PAGE
Admission Charges	5
Committee Members	6
Open Class Contacts	99
4-H Historical/Family Heritage	38
Ag & Natural Resources Dept.	41
Animal Division	48
Bucket Bottle Calf	62
Cats	90
Dairy Cattle	68
Dog	86
Dairy Goat	69
Meat Goat	70
Heifers	65
Horse & Pony	77
Market Beef	57
Pets	89
Poultry	85
Rabbit	83
Sheep	71
Swine	75
ATV Rules	9
Bill Riley Talent Contest	92
Clover Kids (K-3)	9
Communications Department	14
Educational Presentations	16
Extemporaneous Speaking	18
Posters	32
Share The Fun	18
Working Exhibits	17
Expressive Arts Department	29
Photography	33
Visual Arts	29
Family & Consumer Sciences	19
Child Development	23
Clothing Event	11
Consumer Management	25
Food & Nutrition	26
Home Improvement	28
Textiles & Clothing	24
General Rules	8
Go The Distance	39

DIVISION	PAGE
Herdsmanship	53
Horticulture	46
Issues Department	38
Little Miss Contest	92
Mechanical & Engineering Dept.	43
National Code of Show Ring Ethics	54
Non-Animal General Rules	17
Open Class Division	96
Open Class Handy Devices	95
Open Class Pet Division	94
Personal Development Department	36
Queen Contest	91
Schedule of Fair Events	Center
Showmanship	52
Superintendents	7



2008 ADMISSION CHARGES

MAIN GATE ADMISSION STARTS AT
8:00 AM. MAIN GATE ADMISSION ALLOWS
YOU TO VIEW ALL EXHIBITS ON THE
FAIRGROUNDS.

PRESCHOOL.....FREE
 FRONT GATE\$3.00
 Farm Bureau Members-Free on Friday until 6 pm
 Non Farm Bureau Members \$1.00 off until 6 pm

ARM BAND MAY BE PURCHASED FOR \$10.00

All 4-H & FFA Exhibitors will be admitted free if wearing exhibitor's wristband. (Exhibitor passes do not cover grandstand admission.)

Grandstand Admission will be collected as you enter grandstand for these performances.

		Pit Gate	Age 12-Adult	Age 5-11
Thursday 6/26	Motorcycle Races	\$15	\$7	\$4
Friday 6/27	Quad Races	\$15	\$7	\$4
Saturday 6/28	Truck & Tractor Pull	\$15	\$7	\$4
Sunday 6/30	Demo Derby	\$15	\$7	\$4

The Jefferson County Fair Board will endeavor to protect participants from injury.

THE JEFFERSON COUNTY FAIR WILL NOT BE HELD RESPONSIBLE FOR ANY ACCIDENT, DAMAGE, OR LOSS.

JEFFERSON COUNTY FAIR BOARD OFFICERS

Steve Fritchen, President
Larry Kientz, Vice President
Kendra Hellweg, Secretary
Mark Goehring, Treasurer

JEFFERSON COUNTY FAIR BOARD MEMBERS

Mark Goehring 2008
Steve Greiner 2008
Carrol Beasley 2008
Mike Filson 2009
Korwin Hinshaw 2009
Richard Heald 2009
Ben Godwin 2009
Tim Pacha 2010
Denny Thomes 2010
Orville Brown 2010
Steve Fritchen 2010
Larry Kientz 2011
Kendra Hellweg 2011
Bryan Lauderman 2011
Jared Shultz* 2008/2011

*Appointed to board to fill Doug Johnson's position

JEFFERSON COUNTY EXTENSION STAFF

Neric Smith, County Extension Education Director
Lona Harbison, Office Manager
Shirley Stanley, Part-Time Office Assistant
Karen Blakley, 4-H County Youth Coordinator
Byron Leu, Livestock Specialist
Mary Weinand, Resource Management Specialist

FFA INSTRUCTORS

Mark Wittrock, Fairfield
Juston Lamb, Pekin

JEFFERSON COUNTY EXTENSION COUNCIL

Randy Baird, Chairperson
Scott Whitham, Vice Chairperson
Juanita Bray, Secretary
Sheri Stone, Treasurer
Marvin Larson
Sharie Leazer
Wayne Mitchell
Diane Messerli
Jim Yule

**JEFFERSON COUNTY 4-H & YOUTH
COMMITTEE**

Ron Uber, Chairperson
Brian Taglauer, Vice Chairperson
Jodi Hellweg, Secretary

Dean Adam

Jennifer Anderson

Matt Black

Michael Burkhalter

Rhonda Goehring

Crystal Hammes

Everett Lacey

Allen Melcher

Steve Myers

Kevin Peters

Ann Swanson

JEFFERSON COUNTY 4-H TEEN COUNCIL

Hannah Baum

Samantha Blakley

Eric Godwin

Amy Goehring

Sam Humble

Hanna Keller

Brandon Ledger

Chester McKim

Kendall Roulet

Kelsey Smith

Whitney Taglauer

Hillary Wilkinson

Justin Woods

Karen Blakley, Advisor

DEPARTMENT SUPERINTENDENTS

Advertising.....Goehring, Godwin, Schultz
Beef.....Beasley, Hellweg, Schultz, Myers
Bucket Bottle.....Beasley, Hellweg, Schultz, Myers
Bldg/Grounds.....Kientz, Brown, Fritchen, Goehring
Carnival.....Kientz, Goehring
Concessions.....Kientz, Greiner
Camp Grounds & Parking.....Filson, Brown

Commercial Exhibits.....Filson, Brown
Dog Obedience	Teree Hellweg
Dairy	Heald, Godwin
Market Goat.....	Thomes, Heald, Pacha
Horse & Pony...	McIntire, Hinshaw, Lauderman, Uber
Poultry & Rabbits.....	Thomes, Kientz, Godwin
Sheep.....	Pacha, Filson, Lauderman, Burkhalter
Swine.....	Pacha, Filson, Lauderman, Melcher
Track Events.....	Brown, Pacha, Lauderman, Fritchen
Show Ring Leader	Heald

**4-H & FFA Conduct
Rules & Appeal Procedure
During the Jefferson County Fair**

1. CONDUCT RULE FOR 4-H/FFA MEMBERS DURING FAIR. Illegal acts including the possession or use of alcohol, tobacco or illegal drugs will not be tolerated and a zero tolerance policy will be enforced. Further, any 4-H or FFA member who utilizes tobacco while exhibiting his or her project will be disqualified from further participation in the County Fair even though the use of tobacco by the 4-H or FFA member is legal. Violation of this rule shall result in the 4-H or FFA member being prohibited from participating in the remainder of the fair and forfeiture of any premium earned. Any individual who is found to have violated this rule shall have a right to protest pursuant to the protest procedures set out in paragraph 3.

2. Department Superintendent Decisions
Superintendents shall have the right to make the decisions and implement rules within their department. No protest shall be based upon a claim that the judge or judges are incompetent. A protest as to eligibility of an animal or article to compete in any class or as to an interpretation of a rule must be in writing and filed with the Jefferson County Fair Board President before noon the day following the day on which the class was shown. The Jefferson County Fair Board president shall forward the protest to the department superintendents. Any decisions regarding the protest shall be made with a quorum of the Jefferson County Fair Board members present and shall be in writing. The quorum shall consist of a

majority of the members of the Fair Board. No Fair Board member shall be entitled to vote on a matter involving his/her family or a matter in which he or she has a conflict of interest. Any individual affected by the decision shall have a right to appeal pursuant to the protest procedures set out in paragraph 3.

3. APPEAL PROCEDURE

When an appeal is made as provided in paragraphs 1 & 2, it shall be made in writing and filed with the Jefferson County Fair Board President within six hours of receiving the written decision of the Fair Board, accompanied by a \$25 cash deposit. Upon receipt of a written appeal the Fair Board President or his designee, the County Extension Director or designee, and the County 4-H Youth Committee Chair or designee shall hear the appeal. If the appeal is upheld, the \$25 deposit shall be refunded to the individual filing the protest. Expenses of proof shall be assessed against the losing party. The three member committee shall affirm, reverse, or modify the decision and its decisions shall be final. The decision shall be made at the earliest possible time after the appeal is filed.

4 WHEELERS, GOLF CARTS, & ATV'S

The Jefferson County Fair Board has implemented the following policy on the use of 4 wheelers, golf carts, and ATV's. The use of the above vehicles is limited to Fair Board members or their designees.

4-H CLOVER KIDS

Jefferson County 4-H Clover Kids will be able to show 1 exhibit in each of the following areas: Bucket/Bottle Calf, Lamb, Rabbit, Poultry, and Dog and 2 exhibits in the Activity Building.

1. Child must be enrolled in an active Jefferson County Clover Kids Club.
2. Child must have attended at least 2 Clover Kids meetings.
3. Correct forms must be completed and returned to the Extension Office on or before June 6th.

Activities Building Exhibit-Clover Kids

NOTE CHANGE: Youth may bring **2** exhibits to the fair. Exhibit judging will be held Monday, June 23rd from 8:30am. - 3:30 p.m. in the Activity Building. Exhibits will be released Saturday, June 28 at 8:00pm.

Bucket/Bottle Calf Exhibit-Clover Kids

Youth may bring 1 calf to the fair. Exhibits must be checked in on Saturday, June 28 between 9:00 am and 10:00 am. Calves will be put in a pen for the day and will be released immediately following the show. Youth must be signed up for this exhibit before June 6th on the Clover Kids Entry form. Class is open to any newborn or orphan heifer or steer calf. Male calves may be shown as a steer only. Calf must have been born after January 1st of the current year. No show sticks or brushes in show ring.

Lamb Exhibit-Clover Kids

Youth may bring 1 lamb to the fair. The lamb must be checked in on Thursday, June 26 between 9:00 am and 10:00 am. Lambs will be put in a pen for the day and will be released immediately following the show. Youth must be signed up for this exhibit on the Clover Kids form on or before June 6th of the current year.

Rabbit Exhibit-Clover Kids

Youth may bring 1 rabbit to the fair. The rabbit must be checked in on Saturday, June 28 between noon and 1:00 pm. Rabbits will be penned for the day and released immediately following the show. Youth must be signed up before June 6th on the Clover Kids sign up form.

Poultry Exhibit-Clover Kids

Youth may bring 1 poultry exhibit to the fair. The exhibit must be checked in on Friday, June 27 between 1:00 pm and 2:00 pm. Exhibits will be penned for the day and released immediately following the show. Youth must be signed up before June 6th on the Clover Kids Form.

Dog Exhibit – Clover Kids

Youth may bring 1 dog exhibit to the fair. The exhibit must be checked in on Sunday, June 29 between 10:30 and 11:30 am. Exhibits will be kept on a leash or crated while waiting to show and released immediately following the show. Youth must be signed up before June 6th on the Clover Kids form.

4-H CLOTHING EVENTS DAY TUESDAY, JUNE 17, 2008, 3:30-6:30 p.m. JEFFERSON COUNTY EXTENSION OFFICE

Superintendents: Crystal Hammes, Ann Swanson, Jennifer Anderson, Rhonda Goehring

Judges: Angie Ornduff, Margaret Mordan, & Cynthia McAllister

General Rules for Clothing Selection & Fashion Revue

1. No Entry Fee.
2. No Premium Money for this event.
3. Limit of one entry in each division.
4. **Judging will be held on Tuesday, June 17** at the Jefferson County Extension Office, with judging on a first come first serve basis.
5. 4-H members should notify the leaders if they wish to participate in this event before June 6 of this year.
6. Participants may either be Junior, Intermediate, or Senior age 4-H youth.
7. **Clothing Selection:** A member **DOES NOT** have to be enrolled in clothing project.
Fashion Revue: A member **DOES** have to be enrolled in the clothing project.
8. Clothing Selection and/or Fashion Revue report forms are to be completed and brought with the participant to the judging event on Tuesday, June 17. Senior members will be asked to indicate if they will be able to participate at the Iowa State Fair on Friday, August 8 if selected as the Jefferson County representative. Intermediate members will be asked to indicate if they will be able to participate at the Area Clothing Event, Friday, August 1st at Coral

Ridge Mall, if selected as the Jefferson County representative.

9. Each participant must include a color photo of the exhibitor wearing outfit with report forms.
10. Each participant will wear their selected and/or constructed outfit and be conference judged Tuesday, June 17, and appear at the 4-H style show on Sunday afternoon, June 29. Ribbons will be given at the style show. Iowa State Fair and Area Event winners will also be announced at the style show.
11. Clothing Selection and Fashion Revue entries may be entered as a clothing exhibit in the clothing division at the county fair. However, outfits which will be worn by the Iowa State Fair Winner may not be entered as an Iowa State Fair Clothing exhibit from the county.
12. Evaluation will be based on:
 - a. Developing self esteem, posture, poise, & grooming.
 - b. Clear and effective communication: explains decision making, demonstrate knowledge, has written report carefully prepared.
 - c. Choosing clothes for appearance: style, becoming colors, design, awareness of current fashion trends, fit and accessories.
 - d. Choosing clothes for intended purpose, considering costs.
 - e. Evaluating construction and appearance.

FASHION REVUE DEPARTMENT 42

Refer to General Rules for Clothing Selection and Fashion Revue.

1. The outfit must be constructed, hand-knitted or crocheted by the 4-H'er during the current 4-H year.
 - a. Outfits may be either dressy or casual such as tailored or party clothes, suits, active sportswear and coats.

- b. An outfit consisting of one or two pieces is very acceptable for a Fashion Revue entry. Additional pieces do not necessarily strengthen the entry.
 - c. Undergarments may be made or selected by 4-H'er.
 - d. Accessories such as handbags, scarves, ties, decorative collars, suspenders and belts may be made or selected by the 4-H'er.
 - e. Blouses and sweaters are normally considered as garments. If they are used under a coat or jacket for a touch of color at the neck (similar to a scarf) they may be selected or made.
 - f. An outerwear coat is considered an outfit.
2. Four SENIOR level 4-H members may be selected to represent Jefferson County at the Iowa State Fair, Friday, August 8, 2008.
 3. One INTERMEDIATE 4-H member may be selected to represent Jefferson County at the Area Clothing Event Day on August 3rd, at Coral Ridge Mall.
 4. Three top JUNIOR 4-H members may be selected for honorable mention.

Class 280F—Fashion Revue Entry

**CLOTHING SELECTION
DEPARTMENT 44**

Refer to General Rules for Clothing Selection & Fashion Revue.

1. The outfit must be selected by the 4-H member and **MUST BE PURCHASED** (either new or used), since the purpose of the program is to help youth develop skills in buying clothing and accessories. Clothes may be purchased from any source, including consignment shops, used clothing stores, etc. **Clothing items which are home-sewn are not eligible** unless the completed garment was purchased from a used clothing source.
2. Criteria is based on satisfactory selection of a purchased garment that represents one of the following three categories:
 - Casual Clothes: clothes for school or work.

- Sport or Functional Clothes: clothes that assist with a task or activity, protect you from environment or promote safety.
 - Special Occasion (Dressy) Clothes: clothing for special events (graduation, prom, wedding, etc.). Clothing is chosen to allow personal expression with some thought of future use.
3. One girl, one boy and one racial minority SENIOR 4-H'er may be selected to represent Jefferson County at the Iowa State Fair on Friday, August 8.
 4. One INTERMEDIATE girl or boy may be selected to represent Jefferson County at the Area Clothing Event Day.
 5. Three top JUNIOR participants may be given honorable mention.

Class C(J-I-S) Lot 270—Clothing Selection Entry

\$15 CHALLENGE DEPARTMENT 45

All participants (male or female) to qualify for participation in the state event should:

- a) Purchase an outfit that represents the 4-H'ers goal or intended use for the selected outfit.
- b) Have had individual planned or county experience(s) in choosing shopping alternatives, evaluating fit, quality and construction features, price and cost comparison.
- c) Outfits may be selected and/or purchased from a garage sale, consignment store, or resale shop (i.e. Goodwill, Salvation Army).
- d) Cost of outfit must be \$15 or less, not including shoes, accessories, or undergarments.
- e) Receipt(s) MUST be turned in with Clothing Event Report Form.

Class CH (J-I-S) Lot 290—Challenge Entry

COMMUNICATIONS SUNDAY, JUNE 29, 2008

Superintendent: Dean Adam, Jennifer Anderson, Ann Swanson

Judge: Deborah Sinclair

GENERAL RULES FOR COMMUNICATIONS

1. No Entry Fee.
2. Limit of one entry in each division.
3. 4-H members should notify the leaders if they wish to participate in this event by June 6th.
4. Participants may either be Junior, Intermediate, or Senior age 4-H youth.
5. Participants will receive forms prior to judging. The forms must be filled out and brought to the county contest. Presenters will be asked to indicate if they will be able to participate if chosen to represent Jefferson County at the State Fair.
6. Presenters should wear clothes that are appropriate for their presentation. A 4-H chevron should be worn. Presenters are encouraged to wear something green and white to let your audience know you are a 4-H'er.
7. Each participant will be evaluated by the judge. They will visit with the judge immediately following their presentation or skit.
8. Educational Presentations and Working Exhibits are evaluated on:
 - RESPECT:** to yourself, audience and topic.
 - RESEARCH:** well informed with accurate, educational information.
 - RESPONSIBILITY:** smooth presentation with introduction, body and conclusion. Able to respond to questions.
 - RESOURCES:** able to use personal (smile, eye contact, and voice control) and visual aids.
9. Educational Presentations and Working Exhibits and Share the Fun Acts will be given at the County Fair on Sunday, June 29 starting at 2:00 p.m. Ribbons will be given and winners announced at the Fair.
10. Eligible 4-H members who have completed 5th grade may be chosen to represent Jefferson County at the Iowa State Fair. Juniors: 5th & 6th grade; Intermediate: 7th, 8th & 9th grade; Seniors: 10th, 11th & 12th grade.
 - If a Share-the-Fun skit/act selected to participate at the Iowa State Fair involves a whole club, the following criteria must be applied to determine if the club can be entered in the Share-the-fun program at the Iowa State Fair: at least 80 percent of the performing

group must have completed grade five in 2008. Participants at the Iowa State Fair cannot be involved in another event such as clothing program, livestock show or judging during the half-day they are scheduled to participate in 4-H Communications programs. 4-H'ers should be encouraged not to be entered in both the Educational Presentation and Working Exhibit programs at the 2008 Iowa State Fair, and definitely cannot do both a Working Exhibit and an Educational Presentation during the same half-day.

11. STATE FAIR QUOTA:

- Six (6) Educational Presentations
- Four (4) Working Exhibits
- Three (3) Share-the-Fun skits/acts
- Two (2) Communicating Through Posters.
- Two (2) Extemporaneous Speakers

EDUCATIONAL PRESENTATIONS DEPARTMENT 46

Refer to General Communication Rules.

Educational presentations provide an opportunity for members to demonstrate their communication skills by presenting knowledge, information or process to gain a desired response from an audience. A 4-H member may participate in only one Educational Presentation per year at the Iowa State Fair.

Educational Presentations may be given by one or more 4-H'ers. The topic content of the presentation should determine its length. Junior presentations should not exceed fifteen minutes. Intermediate and Senior presentations should not exceed twenty minutes. Iowa State Fair presentations will be held on August 8th, 9th, 13th, and 14th.

**Class 811D —Educational Presentation (Junior)-
To be eligible to participate, youth must have
completed 5th or 6th grades in 2008.**

**Class 811 E —Educational Presentation
(Intermediate/Senior) – To be eligible to
participate, youth must have completed 7th-12th
grades in 2008.**

WORKING EXHIBIT DEPARTMENT 47

Refer to General Communication Rules.

Working exhibits provide members an opportunity to communicate and interact with an audience in an informal way. A 4-H member may participate in only one Working Exhibit per year at the Iowa State Fair. The topic selected by the 4-H'er should be an outgrowth of his/her 4-H experience. It is important that the Working Exhibit be of interest to the audiences. The best subjects involve the audience in some doing, feeling, tasting, smelling, judging, etc.

Working exhibits may be given by one or more 4-H'ers. All Working Exhibits will be scheduled at the county event for a 15-20 minute period. Intermediate & Senior members selected to represent Jefferson County at the Iowa State Fair will be scheduled for a 45 minute period. Junior 4-H'ers will be scheduled for 25 minutes. 4-H'ers are encouraged to keep the cost of working exhibits in mind.

Iowa State Fair Working Exhibits will be on August 8th, 9th, 13th, and 14th.

Class 811H—Working Exhibit (Junior) - To be eligible to participate, youth must have completed 5th or 6th grades in 2008.

Class 811 I—Working Exhibit- (Intermediate/Senior) – To be eligible to participate, youth must have completed 7th-12th grades in 2008.

SHARE-THE-FUN DEPARTMENT 48

Refer to General Communication Rules.

The purpose of Share-the-Fun Acts is to:

Provide an opportunity for 4-H members to perform before an audience purely for the sake of enjoyment.

Share-the-Fun may be done by one or more 4-H'ers.

Share-the-Fun skits will be evaluated on:

1. Performance (showmanship/all participants)
2. Quality (well rehearsed)
3. Audience Appeal (is everyone having fun)
4. Appearance (appropriately dressed for act)

Share-the-Fun skits must not exceed eight (8) minutes in length. Skits must be sensitive to the diversity of Iowa's population. Skits must be in good taste and not offensive to minority groups of Iowans or U.S. Citizens.

Please note: Any Share-the-Fun skit that is selected to represent Jefferson County at the Iowa State Fair must adhere to the above criteria. Skits will be stopped if they exceed the time limit. Iowa State Fair Share the Fun Exhibits will be at 5pm on August 8th (1), 9th (1), and 13th (1).

Class 811 G —Share-The-Fun Act

4-H EXTEMPORANEOUS SPEAKING DEPARTMENT 50

This contest is designed to encourage the development of communication skills with others through enhancing the ability to think, organize, speak, and answer questions readily before an audience. Each contestant will have 30 minutes preparation time. Each speech shall be **not less than four or more than six minutes**. Any 4-H'er may participate at the county fair. Two entries may be selected to go on to the Iowa State Fair. Iowa State Fair participants must be Senior aged 4-H'ers, having completed the 9th grade in 2008. Contest rules may be obtained at the Extension Office or visit the State Fair website at www.iowastatefair.org.

Iowa State Fair Extemporaneous Speakers will present on August 13th (1) AM and 14th (1) PM

Class 811 K - Extemporaneous Speaking

FAMILY & CONSUMER SCIENCES EXPRESSIVE ARTS, PERSONAL DEVELOPMENT, ISSUES DEPARTMENT

4-H Exhibit Bldg. Superintendents: Allen Melcher, Ron Uber, Matt Black

4-H Judging Coordinators: Jennifer Anderson, Ann Swanson

Judges: Carol Pinney, Phyllis Rekemeyer, Barb Oldham, Margaret Mordan, Katy Houston, JoAnn Augspurger

GENERAL INFORMATION FOR ALL EXHIBIT BUILDING EXHIBITS

1. Exhibit classes are broad categories. To plan exhibits, 4-H'ers are encouraged to use project guides and manuals and program materials to determine goals and learning experiences.
2. Eligible exhibits are an outgrowth of the 4-H'ers participation in the selected project or program. Exhibits can be done by an individual or group. Exhibits might be, but are not limited to, an actual product, poster, display box, report, notebook, model, video tape, audio cassette, etc.
3. **NOTE: Any exhibit that is exhibited in the Exhibit Building at the Jefferson County Fair does not need to be evaluated at an achievement show prior to the fair.**
4. Clubs **may** hold local achievement shows, if so they are expected to pay Achievement Show Judge.
5. No entry fees.
6. Exhibit divisions will be as follows:
Junior Division: Having completed 4th, 5th or 6th grade. Intermediate Division: Having completed the 7th, 8th or 9th grade. Senior Division: Having completed 10th, 11th or 12th grade.
7. All exhibits must be prepared by a bona fide 4-H member in Jefferson County, and be an outgrowth of a 4-H project in the current year. If a 4-H goal was set prior to doing a project that was evaluated at school it can be exhibited

- at the fair. Indication must be made on the entry tag that it was a school project.
8. Exhibitors may not exhibit two identical exhibits. A new learning experience or knowledge should be gained from preparing each exhibit.
 9. **IF AN EXHIBITOR IS ABSENT THE DAY OF CONFERENCE JUDGING, HIS/HER EXHIBIT(S) MAY BE BROUGHT TO THE FAIR BY A FAMILY MEMBER AND WILL BE JUDGED BASED ON THE ABSENT MEMBER'S WRITTEN WORK.** Excused absences will be reviewed and determined on a case-by-case basis by the 4-H & Youth Committee.
 10. All articles, including accessories, exhibited must be labeled with the exhibitor's name, 4-H club and class number. Place label in inconspicuous places (i.e. back of posters, underneath sides, waistbands, neck facings, etc.).
 11. An entry form must be attached securely to each exhibitor's entry. This entry form must be either the green form for 5th thru 12th grade members or the white form for Clover, Associate and 4th grade members. The forms are available at the Extension office. Information requested on an entry form is as follows:
DEPARTMENT: (28-Food & Nutrition, 32-Clothing, 20-Science & Engineering, etc)
CLASS NUMBER: (531A, 811L, 461B, etc)
ENTRY: (**Description** of entry-chocolate cake, blue jumper, oak dresser, purple earrings, red accessory box, etc.).
MEMBER'S NAME:
CLUB NAME:
The exhibitor should respond briefly to the following questions about the exhibit:
 - a. What did you want to accomplish by creating this exhibit?
 - b. How did you go about working toward your goal(s)?
 - c. What were the most important things you learned as you worked toward your goal(s)?

- d. What ideas or plans do you have for the future based on what you have learned or discovered?
12. The 4-H'ers goal will form the basis of the evaluation process. All exhibits will be evaluated on the:
- 1) Learning involved
 - 2) Workmanship and techniques
 - 3) General appearance and design.
13. The "4-H Photography Exhibit" label must be attached to each photography exhibit.
14. Exhibit displays should be in proportion to the main item or idea being displayed. If the exhibitor chooses a display to illustrate what was learned, the following maximum size guidelines apply:
- Posters and banners are not to exceed standard poster board size of 22"x28," or foam core board size of 22"x30".
 - Chart boards, graph boards, project presentation boards, and model displays, etc., are not to exceed 4'x4' in size. Maximum size is determined by measuring the flat (unfolded) dimensions.
 - Display boxes are not to exceed 28x22 in height or width and 12" in depth.
- EXCEPTION:** Specific size mentioned in Foods & Nutrition and Poster Art.
15. If audio or visual tapes are to be considered during judging, notation must be made on the entry sheet to the County Extension Office.
16. Original use by a 4-H'er of copyright materials should not be used in 4-H exhibits. A copyright design is not allowable because in the fair setting the exhibit is on public display and that infringes on copyright laws.
17. Noxious weeds, endangered or threatened wild flowers, nests, and small songbird feathers should NOT be used in any exhibit. Pheasant, duck, goose, and quail feathers "legally taken" are acceptable.
18. All exhibits, activities and programs must represent appropriate safety procedures in the development of the exhibit around the evaluation process.
19. All exhibits in these divisions will be Conference Judged according to club schedules.

20. **All exhibitors must wear white/ash shirts/blouses with 4-H chevrons during exhibit evaluation.** White/ash T-shirts with printed 4-H or FFA emblems will be acceptable. 4-H T-shirts and chevrons for attaching to either shirts or blouses may be purchased at the Extension office.
21. The buildings will be closed to the public during judging. Parents or accompanying adults may be present during judging, but only the member may participate in the judging experience.
22. Exhibits will be rated with a blue, red or white ribbon. Green Iowa State Fair Consideration ribbons will be awarded to exhibitors that have completed the 5th thru 12th grade for exhibits evaluated as “outstanding” by the judges. Lavender ribbons will be given to “outstanding” 4th grade exhibits. Exhibits selected for Iowa State Fair will receive purple ribbons. No additional premium money will be given for green, lavender or purple ribbons.
23. Exhibitors who have completed the 5th thru 12th grade and have not graduated from high school before 2008 will be eligible to exhibit at the Iowa State Fair.
24. Exhibits for the Iowa State Fair will be selected by the judges, in consultation with the 4-H Youth Committee, from eligible exhibits, following the completion of conference judging. The Exhibit Building will be closed to the public while the Iowa State Fair exhibits are being selected.
25. An individual member **may not** have more than one exhibit selected to be exhibited at the Iowa State Fair per Division: Family and Consumer Science, Expressive Arts, Personal Development, Issues, Ag & Natural Resources, Science, Mechanics Engineering.
26. The Jefferson County Fair Board and the Jefferson County Extension Staff will use diligence to insure the safety of all articles exhibited, but will not be responsible for damage or loss by fire, theft, etc. Exhibitors should not send small items that have special meaning and historical value as the exhibit or part of an exhibit.

27. **All exhibits will be released Saturday, June 28, at 8:00 p.m.**
28. Exhibits which do not comply with size guidelines, copyright, and safety procedures will not be accepted for entry, evaluation, or display at the Iowa State Fair.
29. Awards will be presented to Outstanding Exhibits in Family & Consumer Sciences classes, Horticulture, Expressive Arts, Ag. & Natural Resources, & Science, Mechanics, & Engineering.

**FAMILY &
CONSUMER SCIENCES
(CHILD DEVELOPMENT, CLOTHING,
CONSUMER & MANAGEMENT,
FOOD & NUTRITION,
HOME IMPROVEMENT)**

Refer to General Exhibit Rules

1. Members may exhibit a total of ten (10) Family & Consumer Sciences exhibits and not more than five (5) from each of the food and nutrition, home improvement, clothing, and child development.
2. A total of approximately fifteen (15) Family & Consumer Sciences exhibits from Child Development, Clothing, Consumer Management, Food and Nutrition and Home Improvement may be selected for advancement to the Iowa State Fair.

**CHILD DEVELOPMENT
DEPARTMENT 34**

Class 501A, Child Development -Educational display or other type of exhibit relating to a child development project/program, such as age appropriate games and toys, original stories, babysitting, toy safety, positive guidance and discipline, kids with special needs, careers, etc. Exhibit information should include what you have learned: 1) about yourself, and/or 2) about children while creating and using this exhibit, and/or 3) about what the child gained or learned from use of the item in the exhibit.

CLOTHING

DEPARTMENT 32

Class 511A, Clothing Design and Creative Sewing

— Includes, but not limited to, constructed garments or accessories; design illustrations, sketches, models, etc.; modified, designed or recycled garments; making a garment that enhances the way you or others look, design, or sew for others, etc. Application of design elements and art principles must be explained when appropriate.

Class 511B, Choosing Clothes and Learning About Fabrics

— Includes, but not limited to, purchased garments or accessories, textile fiber or fabric characteristics, choosing clothes or accessories to enhance the way you or others look, labeling, etc. **(Include only one shoe, earring, etc. if part of the exhibit.)** Application of design elements and art principles must be explained when appropriate.

Class 511C, Clothing Safety and Care

— Includes, but not limited to, decisions about clothes for sports, temperature control and protection, laundry experiences, clothing care, etc.

Class 511D, Other Clothing and Sewing Ideas

— Any other exhibit that is an outgrowth of a 4-H textile and clothing educational experience. Could include but not restricted to: 1) exploration of ethnic or historical clothing; 2) dress as a means of expression; 3) clothes for special needs of handicapped, elderly, children; 4) cultural expression through clothes; 5) career or processes in the textile and/or apparel industry; 6) decorative processes such as textile dyeing, printing, embroidery, knitting, or quilting; 7) construction of household textiles. The exhibit may be an object, notebook, or poster. Application of design elements and art principles must be explained when appropriate.

Special Rule

1. When application of design elements and art principles must be explained, the following guidelines shall be used:

- a) Members in grades 4-6 are responsible only for application of the design element line or color.
- b) Members in grades 7-8 are responsible only for application of two design elements.
- c) Members in grades 9-12 are responsible only for application of at least one design element and at least one principle of design.

CONSUMER AND MANAGEMENT DEPARTMENT 33

Class 541A – SPENDING PLANS AND RECORD KEEPING

- Track your spending (account books, computer records, envelope systems, checkbook records, etc.).
- Set up family record keeping system.
- Survey peer spending habits (allowances, video arcades, clothing, food, etc.).
- Track your 4-H project(s) spending (livestock records, photographs, clothing, etc.).
- Describe appropriate use of credit.
- Track how you spend your time (calendar system, diary, etc.).
- Set up a family calendar system.

Class 541B – COMPARISON SHOPPING

- Compare products.
- Compare type of stores or places to shop.
- Compare cost of shopping with cash and credit.
- Compare colleges, trade schools, etc.
- Compare cost of recreational activities.
- Compare financial institutions (banks, savings and loans, credit unions, etc.).
- Compare car insurance.
- Compare investments and savings.

Class 541C – CONSUMER RIGHTS AND RESPONSIBILITIES

- Explore advertising influences.
- Show how to make a consumer complaint.
- Show where to find consumer information.
- Evaluate reliability of consumer information.
- Describe cost of fraud (shoplifting, bad check, fake ID, etc.).
- Describe potential problems related to privacy issues (social security number, credit card, internet shopping, etc.).

FOOD AND NUTRITION DEPARTMENT 28

Class 521A, Food Preparation and Safety (including Food Preservation) — Includes, but not limited to, prepared product, product evaluation, food preparation terms, storage practices, etc.

Class 521B, Consumer Behavior and Management — Includes, but not limited to, resource management, product comparison, meal planning and service, purchasing, food packaging and recycling, nutrition labeling, etc.

Class 521C, Nutrition and Wellness — Includes, but not limited to dietary guidelines, nutrient functions, physical health, etc.

Class 521D, Other Food and Nutrition Ideas — Exhibit can tell or show any special related topic such as measurement of ingredients, eating out, special recipe collection, cultural food traditions, food science “whys,” careers, etc.

Special Rules

In addition to the general rules 4-H’ers entering Food and Nutrition exhibits must follow these special rules:

1. Two copies of the recipe (ingredients, preparation instructions, time, temperature) **MUST** be included on a 3 X 5 inch card for any **prepared** food exhibit. Source of recipe must be credited.

2. Plate of seven cookies, rolls, etc., is recommended or amount appropriate for size of display.
3. **Preserved** foods must include the Food Preservation Exhibit Label, VI-991201-WB/SAS. Only food processed after August 1, 2007 is acceptable.
 - a. Type of food
 - b. Method of preservation
 - c. Processing time
 - d. Date processed
 - e. Source of recipe and/or method of preservation (if a publication, include name and date)
- f. **Current** USDA and/or Iowa State University guidelines for home food preservation methods must be used. (Check at County Extension Office for recommended practices or call the ISU Answer Line 1-800-262-3804 for current researched information.)
4. Preserved foods exhibits **MUST** include two (2) product samples. One will be opened for evaluation and then discarded. The second will be on display and then will be returned to the exhibitor. Perishable food products will be discarded when removed from display. Standard canning jars are to be clear, not tinted; standard canning lid and screw band. Each jar must be labeled with the following information: Type of food, method of preservation, processing time, date processed, and source of recipe and/or method of preservation.
5. Prepared foods should be placed on a firm disposable plate or flat cardboard. Consider this recommendation rather than pans, plates, china, or baskets due to potential damage or loss. Place exhibit in a reclosable plastic bag with entry tag fastened outside the bag.
6. Products that require refrigeration (cream fillings, cream pies, meat or broth, relish or fruit trays, cheeses, eggs, custards, egg noodles, and friendship starters, etc.) are not acceptable entries for the fair. These items do not hold up well at room temperature and often pose a food safety hazard. Such items will not be accepted, judged, or displayed.

7. Due to safe handling concerns during processing, no meat jerky product exhibits are allowed.
8. All food products and food preparation procedures used, illustrated, or described must be unquestionably safe. **Any exhibit considered to be, or to portray a food safety risk will not be accepted, judged or displayed.**
9. The use of alcoholic beverages in the preparation or production of 4-H food exhibits is NOT permitted.
10. If you choose to use a display box, the dimensions are not to exceed 10"x12"x14". (The three dimensions can be applied to best fit the exhibit size for height, width, or depth.) Posters and other display boards must follow size guidelines in General Rule 12.
11. Food product exhibits must be prepared, baked, or cooked using only food grade utensils and containers.

All food products/exhibits should be appropriate for human consumption/nutritional evaluation.

HOME IMPROVEMENT DEPARTMENT 30

Class 531A, Design in the Home — An educational display, notebook, poster or other type of exhibit such as a design element or art principle, explaining design of an item, selecting an item illustrating design, etc. Must include explanation of how a minimum of two (2) design elements or art principles were used in this exhibit.

Class 531B, Furniture in the Home — Includes, but not limited to, reclaimed furniture, room plans, furniture styles, historic furniture, buymanship, etc. Must include an explanation of how a minimum of two (2) design elements or art principles were used in this exhibit.

Class 531C, Accessories for the Home — Includes, but not limited to, wall accessories, nature accessories, flatware selection/coordination, table design, lighting design, etc. Must include

explanation of how a minimum of two (2) design elements or art principles were used in this exhibit.

Class 531D, Fabrics in the Home — Includes, but not limited to upholstered furniture, pillows, curtains, table linens, storage protection, etc. Must include an explanation of how a minimum of two (2) design elements or art principles were used in this exhibit.

Class 531E, Maintenance in the Home — Includes but not limited to cleaning plan, storage, energy conservation, recycling, own home away from home, etc. **If appropriate**, include an explanation of how the design elements or art principles were used in this exhibit.

Class 531F, Other Home Improvement Ideas — Any other exhibit which is an outgrowth of a home improvement project or program such as decision making process, careers, etc. **If appropriate**, include an explanation of how the design elements or art principles were used in this exhibit.

EXPRESSIVE ARTS (VISUAL ARTS, POSTERS & PHOTOGRAPHY)

EXPRESSIVE ARTS RULES

1. Refer to Exhibit Building Rules
2. A total of approximately 7 Expressive Art Exhibits from Visual Arts & Photography and 2 from Posters may be selected for advancement to the Iowa State Fair.

VISUAL ARTS DEPARTMENT 36

Special rules for Visual Arts:

1. Refer to General Information for Exhibit Building and Expressive Arts Rules.
2. Limit of 5 visual arts entries per exhibitor. No duplicates.
3. Visual Arts judging will be done in conjunction with judging beginning at 8:30 a.m. in the Exhibit Building on Monday, June 23.

4. If a 4-H goal was set prior to doing a project that was evaluated at school it can be exhibited at the Fair.

5. **ARTICLES MADE FROM KITS WILL BE ACCEPTED AT THE JEFFERSON COUNTY FAIR ONLY.**

To be considered for the Iowa State Fair, articles must NOT be made from kits.

EXCEPTION: See Class 821B item #2. (Kits are defined as any prepackaged item where the materials and the design are predetermined by the manufacturer. Examples of preformed molds would be purchased green ware or white ware.)

Articles that use patterns or pictures from magazines as starting points for designs are acceptable, assuming the 4-H'er modifies the design to make an original statement.

(Combining parts of patterns with the member's own ideas can result in an original design; changing the color and/or size does not make the design original.)

8. If the exhibit results in a finished art product, include the starting source of the design. (This might include cut paper designs, sketches, a piece of tree bark, doodles, magazine pictures, two patterns and a sketch they combined.)
9. Copyright material should not be used in 4-H Visual Art Exhibits.

Class 821A, Original Art — Original art should be an exhibit that has a **design** unique to you. By using one medium or a combination, an individual creates an object that is not recognizable as another's work. Trademarks, logos, and other copyrighted images **cannot** be original since some other artist has already designed and created it. You must identify and explain the application of the design element(s) and art principle(s) featured in this exhibit and describe or explain the source of the design.

Does one (or more) of the following questions help describe what your exhibit is about? If it sounds like your exhibit, it should probably be in the Original Art class.

1. Did your idea come from something you thought up, the placement of geometric shapes, or something viewed in nature?
2. Did you see a design, magazine picture, painting, etc., that gave you an idea and you made at least **major changes** to that idea? (Include the source of design and explain the major changes.) You know it is a major change if you quickly look at your original source and your exhibit and they DO NOT seem similar.
3. Did you create your exhibit by observing things around you like looking at a still life or from a photograph you took of a scene?
4. Are the people in your exhibit (drawing, painting) ones you observed, studied, sketched, or photographed and not people you saw in a magazine or other photograph? (If the person is identifiable from your picture, did you request their permission to use them in your art work?)

Class 821B, Design and/or Technique Exploration

— This exploration class is an exhibit that provides an individual the opportunity to explore a medium, practice a skill, or study a design element or art principle. An explanation of the application of design elements or art principles used when making the exhibit **must be included**. This exhibit may be an object, portfolio, display, poster, or organized sketchbook. If a non-original design source is used, its origin (where the idea was found, any pictures, sketches, etc.) must still be credited. Logos, trademarks, pictures or designs that are copyrighted may only be used if permission for this specific use has been granted from an authorized authority. The written permission must be included in the support materials provided with the exhibit or the piece is not legal for public display and will be disqualified. For display purposes, those exhibits with written permission will be labeled, “Copyright permission granted”.

In this class

1. Directions may be used to make the exhibit (basket weave pattern, quilt pattern, process instructions i.e. tie dying). Include the source

- of instructions or copy of the instructions. In your write-up be sure to focus on the design elements or art principles used in making decisions to develop the exhibit.
2. It may be a process evaluation shown by examples that demonstrate a different step of the process needed to complete a finished product. This process evaluation is the **only** acceptable place to exhibit portions of green ware or white ware to provide the appropriate surface to illustrate the process techniques being explored. Processes could include glazes, paint blending, surface preparation to the final product. A finished product will only be used in the evaluation to determine level of accomplishment of the goal.
 3. A portfolio showing several examples of practicing techniques of a medium where you used design ideas from photos, magazines, pictures. You must credit the sources of design ideas.
 4. You may use a series of rubber stamps, stencils, etc. to create a design, develop technique or study color and texture. Detailed explanation of the use of the design elements/art principles is required.
 5. Create a picture while practicing and improving your technique(s) of drawing, shading, blending, etc. The write-up focuses on the techniques practiced to demonstrate skills in applying the design elements and/or art principles.

Class 821C, Other Visual Art Topics — Exhibits might include study on an individual artist, style, craft business or marketing process, planning group tour, career options, etc.

VISUAL ARTS AWARD

Jefferson County Mutual Insurance Association will sponsor a cash award to an outstanding visual art exhibit selected by the judge.

4-H POSTERS

DEPARTMENT 49

1. Any currently enrolled 4-H'er who has completed the 4th thru 12th grade may enter a poster exhibit. This includes 4-H'ers of organized 4-H clubs, 4-H special interest groups and 4-H school enrichment programs.
2. All posters must be designed on, or affixed to, standard poster or foam core board, minimum size of 14" x 20" or maximum of 15" x 22". Posters may be vertical or horizontal and may be any medium: watercolor, ink, crayon, oils, acrylic, charcoal, collage. Posters cannot be 3-dimensional.
3. Posters cannot incorporate copyright material or exact copies of other promotional designs, such as the Youth Conference theme logo. The 4-H Clover is a copyright logo. 4-H'ers can include the clover, but do not copy/print other material over the clover.
4. Each poster must have the completed 2008 Poster Exhibit Entry Form (VI-8128-SAS) attached to the back, as well as the County Exhibit Entry Form.
5. "Communicating Through 4-H Posters" themes:
 - a. **4-H is...**(open to 4-H'ers interpretation)
 - b. **Join 4-H**
 - c. **Ignite the Flame**
(2008 Iowa 4-H Conference theme)
 - d. **U Gotta Love It!**
(The 2008 Iowa State Fair theme)
6. No Entry Fee. Only one entry per member.
7. Posters will be judged during conference judging at Fair.
8. Two qualified entries from 5th to 12th grade members from Department 49 may be selected to advance for Iowa State Fair evaluation.

Class 811J -Poster Communication

PHOTOGRAPHY

DEPARTMENT 40

Refer to the General Information and Expressive Art Rules

1. Photographs may be either black and white or color. Photographs may be processed from

- negatives, slides, or digital cameras and computer manipulation programs and must have been taken during the current 4-H year.
2. If photos are mounted, they can be (a) flush-mounted (no mounting board showing) on mounting board, or (b) with mount borders (window mat or flat mount directly on board). Exhibitors may cut their own mounting boards, use inexpensive ready-cut window mats, or have matting done professionally. In all cases 4-H'ers are responsible for design decisions such as border width, color, and size. **Framed photos, including floating frames, will not be judged.**
 3. If photos are not mounted, they may be exhibited in a clear plastic covering such as photo album pages.
 4. A series is a group of photos or slides that are related or tell a step-by-step story. Photos must be mounted as one unit in story order. Slides should be numbered and/or displayed in sequence.
 5. The "4-H Photography Exhibit" label must be completed and attached to the back of each photo exhibit entry. Label is available at the county Extension office.
 6. Captions are optional; if used, they should be short.

Class 851A, Mounted Photograph or Series — Individual photo or series photos where each **exhibited photo is at least 5x7 inches** (the standard 5x7 print). Larger photos may be cropped if necessary for better composition, but no smaller than 5x7 inches. Series entries should consist of three to five photos (each 5x7 minimum) mounted as one piece. Mounting is required for all entries in this class. Use of standard commercial photo mats is acceptable provided that exposed area of photo is not less than 4 ½ x 6 ½ inches. See rule number two above for mounting suggestions.

Class 851B, Single Photograph or Series — **A photo of any size** may be considered in this class. There is no minimum size. Series entries should include three to five photos. If the series is mounted, it should be done as one piece. See item numbers two (2) and three (3) above for exhibiting suggestions.

Class 851C, Contemporary/Creative Photography

— A photograph that is understood to be a creative, imaginative, or experimental departure from realism. Examples of Contemporary/Creative Photography may include: abstracts, derivations, distortions, black light, bas-relief, diazochrome, posterization, solarization, multiple exposures, montages, kodalith, multiple images with trick lenses and similar processes.

Special exhibit requirements for Class 851C:

1. Photograph must be mounted but not framed.
2. Current 4-H Photography Exhibit Label must be attached to the back of the exhibit.
3. **A detailed report** must be attached clearly stating the process used to achieve the desired effect. Each step and materials or equipment used must be included in this report.
4. Where possible, a copy of the photo before manipulation should be included with the report.

Class 851D, Photography Idea — This class is designed for creative photography and experiments that do not fit into the previous classes. Photos or educational displays in this class may make use of creative camera techniques, darkroom techniques, mounting and exhibiting techniques, or computer enhancement, just to name a few possibilities. Above all, creativity and originality are valued. If exhibit is a photo or collage of photos, it **must not be framed** and must have the photo exhibit label.

NEW Class 851E 4-H'ers in Action -Open to all 4-H members in grades 4-12; participants do not have to be enrolled in photography. The Iowa 4-H Foundation announces a special opportunity for all 4-H members to participate in a statewide photo exhibition titled "4-H'ers in Action!" The exhibition will feature the best photo from each participating county on display at the 2008 Iowa State Fair. Photos selected for the exhibition will also be considered for a 2009 calendar and other 4-H promotional materials. No ribbon placing will be given. Each participating county will select one entry

that best represents “4-H’ers in Action!” in their county to be included in the state fair exhibition. Any 5” x 7” color photograph (vertical or horizontal), taken after January 1, 2006 that shows a 4-H’er or group of 4-H’ers involved in a project, doing community service, giving an educational presentation, enjoying a recreational activity, or anything else related to the 4-H youth program. Photos should reflect any of the many aspects of 4-H throughout the year. (Because photos may be selected for an exhibition at the Iowa State Fair, negatives or digital copies of the photos should be kept on file.) Include a photo story to tell what’s happening in the photo and explain why it’s the best example of “4-H’ers in Action!” from your county. Captions are limited to 75 words or less. Photography and story writing are to be done by a 4-H youth member.

PERSONAL DEVELOPMENT DEPARTMENT 38

1. Refer to General Information for Exhibit Building Exhibits & Family and Consumer Science Rules
2. No Entry Fee
3. Limit of one entry per class. Total not to exceed three (3) entries.
4. Personal Development judging will be done in conjunction with Home Economics judging beginning at 8:30 a.m. in the Exhibit Building on Monday, June 23, and proceed according to the Home Economics judging schedule.
5. Approximately two (2) entries may be chosen from this department to advance to the Iowa State Fair.
6. Refer to General Information for exhibit size guidelines.

Class 806A, Citizenship — Any exhibit that is an outgrowth of participation in a citizenship project or program such as responsibilities with family, club, community, world, plan community service activity, learn about local and county government, study family heritage, etc.

Class 811A, Communication — Any exhibit that is an outgrowth of participation in a communication project or program such as describing the communication process, methods of communicating, or a product based on a communications method which might include slide/tape, videotape (done in standard play), or feature news stories; or theatre arts such as costuming, sound effects, props and staging, etc.

Class 831A, Health — Any exhibit that is an outgrowth of participation in a health project or program such as personal health analysis, physical fitness plan, home health hazard hunt, body systems and functions, daily food intake plan, minor injury treatment, community health services, effects of smoking, etc.

Class 841A, Leadership — Any exhibit that is an outgrowth of participation in a leadership project or program such as types of leadership, analysis of personal leadership styles and qualities, processes to determine the identification of community needs, resource analysis, activity plan, or youth as partners.

Class 871A, Music — Any exhibit that is an outgrowth of participation in a music project or program such as study of a composer, music history, comparison of types of music, composing an original song, teaching music to others, making a musical instrument, sharing musical programs, etc.

Class 881A, Safety — Any exhibit that is an outgrowth of participation in a safety project or program such as home hazard hunt, organize safety poster contest, conduct farm safety program, attend CPR training, develop home fire safety plan, etc.

Class 891A, Self Determined — Any exhibit that is an outgrowth of participation in a self determined project or program which does not fit any other project class.

ISSUES DEPARTMENT DEPARTMENT 41

Class 950A, Societal Issues — Any exhibit by an individual or group that is an outgrowth from an Extension 4-H educational experience. Exhibits might include, but are not limited to, topics such as water quality, erosion, pollution, radon, substance abuse, teen pregnancy, animal welfare/rights, etc.

Include information on:

- What is the societal issue?
- How does my/our goal relate to the issue?
- What did I/we learn about the issue?
- How can I/we best communicate the importance of the issue?
- What did I/we do to educate others about the issue?

4-H HISTORICAL/FAMILY HERITAGE – DEPT. 52

PURPOSE: This class is designed to help participants gain a greater appreciation for and to focus on 4-H history and family heritage. Emphasis is also provided for an intergenerational focus. Participants (youth and adults) are encouraged to learn and share more about the history of 4-H in Iowa and/or their family heritage. This class is designed and intended to provide an opportunity for 4-H'ers and adults to form a team in planning and developing an exhibit to share together learning related to 4-H history and heritage.

Special Exhibit Guidelines

1. Each county may enter **two (2) exhibits in this class for the Iowa State Fair**. If two exhibits are selected, at least one (1) **must** be a 4-H history/4-H heritage exhibit.
2. If selected for the Iowa State Fair the 4-H youth exhibitor(s) will receive a special recognition certificate in place of ribbons.

3. The exhibit must be an outgrowth of a 4-H learning experience planned and completed by one or more 4-H'er(s), of eligible exhibitor age, **with one or more adult(s)**.
4. The exhibit is to be an outgrowth of work done, through 4-H, to accomplish a goal(s) determined jointly by all the participating 4-H'ers and adults.
5. Exhibits might be an actual product, poster, display, report, notebook, model, video tape, audio cassette, etc.
6. The exhibit should include the following information:
 - What was the goal(s)? Include for both 4-H'er(s) and adult participant(s).
 - How was the idea for the exhibit determined and developed?
 - **What responsibilities did each participant, youth and adult, involved in the learning experience complete?**
 - What was the learning of this experience for each individual? This might include what you learned about working with each other.
 - What were the benefits of this experience for the participants (youth/adults/together)?
 - What plans do you have to continue this interest?
7. Exhibitors are responsible to read and comply with the Iowa State Fair "General Exhibit Rules," including size, copyright where applicable, safety, etc. to be eligible for Iowa State Fair entry.

Class 811L, 4-H Historical/Family Heritage — Any exhibit by **one or more 4-H'ers with one or more adult(s)** which is an outgrowth of a goal identified by the participants. Topics might be related to the history of: 4-H, a 4-H project, educational experience, activity, family heritage, Iowa, etc.

4-H GO THE DISTANCE! SPECIAL EXHIBIT CLASS

Rules

This class is designed to help participants gain a greater appreciation for and understanding of the role nutrition and physical activity has in promoting health and well-being. Participants are encouraged to

learn about how nutrition and physical activity affect the overall health (including physical performance and disease risk) of an individual or group. This class is intended to provide an opportunity for 4-Hers, as an individual, club or team, to plan and develop an exhibit that shares what they have learned about nutrition and physical activity in relation to health.

Special Exhibit Guidelines

1. Each county may send two (2) exhibits in this class to the Iowa State Fair.
2. The exhibit must be an outgrowth of a 4-H learning experience planned and completed by one or more 4-Hers, of eligible exhibitor age.
3. The exhibit is to be an outgrowth of work done, through 4-H, to accomplish a goal(s) determined by the 4-Her(s).
4. Exhibits might be an actual product, poster, display, report, notebook, model, video tape, audio cassette, physical activity and menu plan, etc.
5. The exhibit should include the following information:
 - a. What was the goal(s)?
 - b. How was the idea for the exhibit determined and developed?
 - c. What responsibilities were completed by each participant involved in the learning experience?
 - d. What did you learn about nutrition and physical activity?
 - e. What plans do you have to continue this interest?
6. Exhibitors must comply with the Iowa State Fair 'General Exhibit Rules,' including size, copyright where applicable, safety, etc., to be eligible for Iowa State Fair entry.

Class 960A — Any exhibit, by one or more 4-H'ers, which is an outgrowth of a goal to explore an area of nutrition and physical activity for personal development.

Class 960B — Any exhibit, by one or more 4-H'ers, which is an outgrowth of a goal to provide leadership in the areas of nutrition and physical activity in a group setting (ex: family, club, community, etc.).

Class 960C — Any exhibit, by one or more 4-H'ers, which displays citizenship in the areas of nutrition and physical activity within a community (example: senior living center, school, etc.).

AGRICULTURE AND NATURAL RESOURCES DEPARTMENT 22

Judge: Ron Pinney

1. Applicable rules and regulations, listed in Exhibit General Rules and Regulations, apply to this dept.
2. Limit two (2) entries per class. Total not to exceed ten (10) entries.
3. Approximately two (2) exhibits from this division will be chosen for the Iowa State Fair.

Class 101A, Animal Science — Any exhibit (excluding an animal itself) that is an outgrowth or a small or large animal project or program including beef, dairy, goat, dog, horse, pets, poultry, rabbit, sheep and swine. Ownership of an animal is not required for entry in this class. Exhibit topics might include, but are not limited to, selection, feeding, financial management, waste management, use of records, health care, housing or career opportunities.

Class 211A, Conservation — Any exhibit that is an outgrowth of a conservation project or program such as soil conservation, creating habitats, wetland restoration, energy conservation, planting windbreaks, etc.

Class 221A, Entomology — A general or special collection, from an entomology or bee project (excluding live specimen.), or any exhibit that is an outgrowth of an entomology or bee project or program such as life cycle, bee management, products (honey, wax), equipment, diseases, pests, habits of insects, insect genetics, IPM scouting, etc.

Class 231A, Veterinary Science — Any exhibit that is an outgrowth of a veterinary science project or program such as maintaining health, cause and prevention of disease, internal parasites, public health, careers, etc.

Class 301A, Other Agriculture and Natural Resources Ideas — Any other exhibit that is an outgrowth of a 4-H Agriculture and Natural Resources project or educational experience that does not fit any previous class listed.

Class 701A, Crop Production — Any exhibit, that is an outgrowth of participation in a corn, soybean, small grain or forage project or program. If the exhibit involves a crop specimen, include the variety and planting date. Exhibit topics might include, but are not limited to, variety selection, plant growth, planting, plant nutrition, weed, insect or disease control, environmental protection, harvesting, storage, marketing, or career opportunities.

Class 706A, Forestry — General or special collection, i.e., leaves, seeds, etc.

Class 706B, Forestry — Any exhibit that is an outgrowth of participation in a forestry project or program such as insect or disease control, growth stages, type of tree for intended use, etc.

Class 711A, Horticulture — An exhibit that is an outgrowth of participation in flower gardening and ornamentals, home garden, small fruit crop, and vegetable crop project or program. Exhibits might include such ideas or concepts as cultivar selection, plant nutrition, insect, weed or disease control, harvesting, preservation, marketing, careers, etc. To exhibit vegetable specimen (project), refer to the 4-H Horticulture Show Department.

Class 711B, Home Grounds Improvement — An exhibit which is an outgrowth of participation in a home grounds improvement project or program. Exhibits might include ideas or concepts such as landscape plans, techniques, selection of landscape plants, garden design, garden features, careers, etc.

Class 741A, Plant Science — Any exhibit that is an outgrowth of a plant science project or program such as collections plant growth, plant parts, soil structure, soil maps, germination, cross breeding, root systems, etc.

Class 865A, Outdoor Adventures and Camping – Any exhibit which is an outgrowth of participation in an outdoor adventure or camping project or program such as camper safety, fire building, rainy day activities, outdoor cooking, day camp plan, selecting camping equipment, equipping a backpack, resource file of camping activities, orienteering, outdoor ethics, etc.

Class 880A, Safety and Education Shooting Sports – Any exhibit which is an outgrowth of participation in a SESS project or program such as archery, rifle, shotgun, muzzle loader, etc. Topics may include selection of equipment, record keeping in scoring, safety practices, care and storage of equipment, ethics, etc.

Class 911A, Fish and Wildlife — Any exhibit that is an outgrowth of participation in a wildlife project or program such as fish and wildlife identification, observation, habitats, fish and wildlife harvest, other activities, etc.

AG & NATURAL RESOURCES AWARDS

Jefferson County Soil & Water Conservation
Jefferson County Soil & Water Conservation will sponsor two cash awards to the best overall Conservation exhibits. 1st place \$15.00, 2nd place \$10.00.

Southeast Research Farm
Southeast Research Farm will sponsor two cash awards to the best overall Plant Science or Crop Production exhibit. 1st place \$15.00, 2nd place \$10.00

SCIENCE, MECHANICS AND ENGINEERING DEPARTMENT 20

Judge: Ron Pinney

1. Applicable rules and regulations, listed in Exhibit General Rules and Regulations, apply to this dept.
2. Limit two (2) entries per class; total not to exceed ten (10) entries.

3. Approximately six (6) exhibits may be chosen from this department for advancement to the Iowa State Fair. Exhibitors who have completed the 5th thru 12th grade and have not graduated from high school before 2008 will be eligible to exhibit at the Iowa State Fair.

Class 401A, Aerospace — Flyable model built from a kit or original design.

Class 401B, Aerospace — Educational display or other type of exhibit showing an aerospace idea such as forces involved in flying, model rocket photography, safety in flying model rockets or airplanes, test for rocket stability, etc.; may include scale models or kits to illustrate a concept.

Class 421A, Automotive — Repaired or restored vehicle. [NOTE: Cars will be on display at the Iowa State Fair one day only, Thursday, August 7. Exhibitors will participate in conference judging of their exhibit on August 7.]

Class 421B, Automotive — Educational display or other type of exhibit showing an automotive idea such as safe operation, maintenance plan, comparison shopping, principles of systems operations such as electrical, braking, air bags, etc.

Class 901A, Computer — Educational display or other type of exhibit showing:

- an original computer program written by the exhibitor in a common computer language, including documentation; or
- an applied use of existing software (database, spreadsheet, graphic design, etc.) including printouts of the application showing work product; or
- another idea that is an outgrowth of participation in a 4-H computer project or program.

Class 611A, Electric/Electronics — Constructed or repaired article or educational display or other type of exhibit showing an electric or electronic idea such as safety, construction techniques, lighting effects, electrical energy sources, etc.

Class 451A, Small Engine — Repaired or restored operating engine or educational display or other type of exhibit showing a small engine idea such as maintenance, function of parts, comparisons, etc.

Class 441A, Tractor — Repaired or restored tractor. NOTE: A Conference Judging opportunity for exhibitors in class 441A will be offered during State Fair exhibit check-in, August 5. Tractors will be displayed outside and/or in a tent throughout the Iowa State Fair, August 7-17.

Class 441B, Tractor — Educational display or other type of exhibit related to tractor showing an idea such as safe operation, maintenance plan, engine components, operation costs, principles of engine operation, safety hazards, etc.

Class 411A, Welding — Constructed article or educational display related to welding showing an idea such as safety, types of welds, comparisons of welds, etc.

(NOTE: Large items may be displayed outside.)

Class 461A, Woodworking — New constructed and finished article. (NOTE: Large outdoor items may be displayed outside.)

Class 461B, Woodworking — Educational display or other type of exhibit showing a woodworking idea such as type of woods, wood finishes, safety precautions, tools and proper use, wood fasteners, woodworking skills and techniques, etc.

Class 893A, Science and Technology — Educational display or other type of exhibit showing how science and math help us understand the world. May include constructed article, posters, portfolios, notebooks, etc., to show and explain what was learned.

Class 601A, Other Science, Mechanics and Engineering Ideas — Any other exhibit that is an outgrowth of a 4-H science, mechanics and engineering project or educational experience that does not fit any previous classes listed. (Note: large items may be displayed outside.)

AWARD

Jefferson Co. Mutual Insurance Association

Jefferson County Mutual Insurance Association will sponsor a cash award to the top two outstanding exhibits in the Science & Engineering Classes.

4-H/FFA HORTICULTURE

DEPARTMENT 24

Judge: Ron Pinney

1. Applicable rules and regulations, listed in Exhibit General Rules and Regulations, apply to this department.
2. Exhibits should be an outgrowth of participation in the horticulture project of home garden, vegetable crop or flower gardening.
3. An exhibitor may have only one (1) Vegetable Collection entry.
4. An exhibitor may have only five (5) individual garden vegetable entries. Limit one per class.
5. An exhibitor may have only one (1) flower entry.
6. All entries must have been grown by the exhibitor as a 4-H/FFA project.
7. Vegetables should be prepared and displayed as recommended in the publication 4H-462, "Harvesting and Preparing Vegetables for Exhibit."
8. Exhibits are to be maintained in good condition throughout the fair and are the responsibility of the exhibitor.
9. Classes in this Horticulture Division are not Iowa State Fair Classes.
10. Vegetables may be exhibited at the Iowa State Fair by 4-H members in the 4-H Horticulture Show. For specific information contact the Jefferson County Extension Office.

INDIVIDUAL VEGETABLES CLASS

Class 1020: Exhibitors are encouraged to follow the recommendations in publication 4H-462, "Harvesting and Preparing Vegetables for Exhibit" in order to determine the quantity of vegetables to be displayed.

VEGETABLE COLLECTION

Class 1021: Exhibitors must display no less than five different kinds of vegetables as a collection.

FLOWERS

Class 1050 - One single stem exhibited in a container. Refer to publication 4H-464, "Preparing Cut Flowers and Houseplants for Exhibit".

HERB COLLECTION

Class 1060 - Collection of four (4) herb species to be displayed in separate jars / bottles of water. Specimens should include three (3) stems of adequate length for each species. Each herb species should be properly labeled.

JUMBO VEGETABLES

Class 1065 - Tomato - 1 specimen

Lot 1066 - Potato - 1 specimen

Lot 1067 - Pumpkin (woody stem) - 1 specimen

Lot 1068 - Squash (fleshy stem) - 1 specimen

The vegetables will be placed and awarded premiums on the basis of weight as ascertained by the Supt.

Only **one winner** will be awarded in each lot.

NOVELTY CLASS

Class 1070—Unusual formed vegetables.

This class is for unusual formed vegetables that have grown in your garden. Example: A potato that looks like Mickey Mouse or a twin carrot. **Only one winner in this class.**

HORTICULTURE AWARD

Shirley and Leland Stanley will be sponsor an award for the Best Overall Horticulture Exhibit.

4-H AND FFA LIVESTOCK GENERAL RULES AND REGULATIONS

- 1. ALL EXHIBITORS AT THE JEFFERSON COUNTY FAIR AGREE TO ABIDE BY ALL RULES & REGULATIONS SET FORTH IN THIS PREMIUM LIST AND ALSO ABIDE WITH ANY RULINGS MADE BY THE FAIRBOARD NOT COVERED IN THIS PREMIUM LIST, WITHOUT RECOURSE.**
2. All exhibits will be brought in at scheduled times and must be put in pens and stalls as directed.
3. **NEW IN 2008 –**
 - **ALL TRAILERS ARE TO BE PARKED IN DESIGNATED AREA TO THE SOUTH OF THE BARNS.**
 - **NO LIVESTOCK (EXCEPT HORSES) WILL BE ALLOWED OUTSIDE OF THE GREEN FENCE AT ANYTIME.**
 - **ALL LIVESTOCK IS TO REMAIN IN THE BARNS FROM 8:00 A.M. TO 8:00 P.M. UNLESS BEING SHOWN OR PREPARED FOR SHOW. IE: NO CATTLE TO TIE OUTS BEFORE 8:00 P.M. OR AFTER 8:00 A.M.**
4. Anyone bringing swine, beef, sheep, dairy cows, dairy goats, meat goats, rabbits, or poultry must be FSQA certified.
5. All pens and stalls must be cleaned of manure, etc at the close of fair and the pen or stall checked by the department superintendent OR premium money for that exhibit will be forfeited. This must be done by 2:00 pm Monday, June 30 or earlier if arrangements are made with the department superintendent.
6. Any bonafide Jefferson County 4-H/FFA member is eligible to exhibit provided they

are officially enrolled in 4-H & FFA in Jefferson County.

7. Proper project identification must have been recorded with the Jefferson County Extension Office by the deadline date:
Market Beef-December Weigh-In
Market Swine-March Weigh-In
Market Sheep, Bucket Bottle Lambs and Market Goats-April Weigh-In
Breeding Beef, Bucket/Bottle Calves, Dairy, Dogs, Pets, Cats, Horses, Poultry, Rabbit, Breeding Swine, Breeding Sheep-May 15
8. **SUBSTITUTE SHOWMEN-** All showing must be done by 4-H or FFA member owner. In case of sickness or excused absence an exhibitor may select another FFA or 4-H member to show the exhibit. Excused absences will be reviewed and determined on a case-by-case basis by the 4-H & Youth Committee. Absent members will not be eligible for showmanship.
ASSISTANT SHOWMEN-In case of two entries in the same class the exhibitor may select another 4-H or FFA member as an assistant. The substitutes and assistants must be approved by the department superintendent.
9. **SUBSTITUTE & ASSISTANT SHOWMEN MUST BE A 4-H/FFA MEMBER ELIGIBLE TO EXHIBIT AT THE JEFFERSON COUNTY FAIR.**
10. No one is allowed in the show ring except the 4-H/FFA members showing, superintendents, judges, and show secretaries.
11. **LIVESTOCK SELLING IN THE 4-H/FFA AUCTION MUST HAVE BEEN SHOWN IN THEIR RESPECTIVE CLASSES.**
12. **CATTLE ONLY** must be taken off water at 12:00 midnight preceding the sale. Swine may be fed the morning of the sale but must be completed by 8:00 am.
13. Checks in payment for purchases must be turned into the clerk in the 4-H building. No livestock will be released from the grounds

- until settled for and release slip will be issued. Checks will be mailed to the seller.
14. The livestock not selling will be released according to schedule.
 15. The stalls and pens in exhibition places must be cleaned before 8:00 a.m. each day of the show and all refuse matter disposed of as the department superintendent may direct.
 16. Manure must be placed in designated disposal areas. It is the responsibility of each exhibitor to keep the pen, stall, aisle, and area around his/her exhibit clean.
 17. The Fair Board will not be responsible for any injury to any exhibitor or exhibit.
 18. No diseased animals will be housed on the grounds. ALL ANIMALS must meet the State Health Requirements of livestock for exhibitions at county shows and fairs.
 19. Premiums will be awarded as follows: Blue, \$3.00, Red \$2.00, White \$1.00.
 20. All checks must be cashed within 60 days of issue. Premiums will be paid only to 4-H/FFA Exhibitors who meet the qualifications as set forth in the County 4-H Rules & Regulations and this premium list.
 21. An animal cannot be a champion unless it is blue ribbon quality.
 22. All exhibitors in the show ring must wear 4-H/FFA shirts respectfully. 4-H shirts should be white or ash in color. Shirts and chevrons will be available for purchase in the Extension Office. THIS RULING APPLIES TO ALL 4-H AND FFA CLASSES INCLUDING ALL HORSE AND PONY CLASSES, EXHIBITORS ARE TO WEAR BLUE JEANS. This ruling also applies to sale day in the sale ring.
 23. 4-H and FFA exhibitors will be issued wrist bands that will allow them free admission at the main entrance gate only.
 24. These wristbands must be worn by exhibitors to be valid.
 25. **All livestock bids must be in by 5:00 pm, on Friday, June 27. No other bids will be accepted after this time unless so determined by the superintendents.**

STATE HEALTH REQUIREMENTS
HEALTH REQUIREMENTS FOR EXHIBITION
OF LIVESTOCK, POULTRY & BIRDS AT A
COUNTY 4-H/FFA FAIR

ANY EVIDENCE OF WARTS, RINGWORM,
FOOT ROT, PINK EYE, DRAINING
ABSCESSSES OR ANY OTHER CONTAGIOUS
OR INFECTIOUS CONDITION WILL
ELIMINATE THE ANIMAL FROM THE SHOW.

No individual Certificate of Veterinary Inspection will be required on animals or poultry exhibited at a County 4-H/FFA Fair, but the animals must be inspected when unloaded or shortly thereafter by an accredited veterinarian. Each show **must** have an official veterinarian. Quarantined animals or animals from quarantined herds cannot be exhibited.

Swine exhibitors at county fairs that do not require a Certificate of Veterinary Inspection, **must sign and present** an owner affidavit that the animals being exhibited did not originate from a quarantined herd and to the best of their knowledge, swine dysentery has not been in evidence in their herd for the past 12 months.

Swine returning from an exhibition to its home herd or moved to a purchaser's herd, following an exhibition or consignment sale, must be isolated and retested negative for pseudorabies not less than 30 days and not more than 60 days after reaching the swine's destination. (Code of Iowa 166D.13 (2))

SHEEP AND GOATS

All sexually intact sheep must have an individual scrapie flock of origin identification tag. All sexually intact goats that are housed with sheep must have an individual scrapie flock of origin identification tag. Any evidence of club lamb fungus, ring worm, draining abscesses, foot rot, sore mouth, or any other contagious disease will eliminate the animal from the show.

POULTRY AND BIRDS

All poultry exhibited must come from U.S. Pullorum Typhoid clean or equivalent flocks or have had a negative Pullorum-Typhoid test within 90 days of exhibition and the test must have been performed by an authorized tester. However, “Market Classes” of poultry consigned to a slaughter establishment are exempt from the Salmonella testing requirements. A distance of ten or more feet and/or an eight foot high solid partition must separate “Market Classes” of poultry from all other poultry.

DOGS AND CATS

All dogs and cats exhibited must have a current rabies vaccination certificate.

THE DECISION OF THE OFFICIAL SHOW VETERINARIAN WILL BE FINAL

**John J. Schilts, D.V.M., State Veterinarian,
Iowa Department of Agriculture and Land
Stewardship.**

SHOWMANSHIP CLASSES

1. The objective of this class is to give recognition to those exhibitors who exhibit the principles of good showmanship, both preparation of their animal for the show ring and presentation of their animal in the show ring.
2. A showmanship class will be held at the conclusion of each livestock division.
3. An exhibitor may participate in more than one division, if they exhibited in those divisions.
4. Each exhibitor must show his/her own animal.
5. Awards will be given in the swine, sheep, dairy cattle, rabbits, poultry, goats, beef, and horse divisions.
6. SENIOR SHOWMANSHIP-Having completed the 10th, 11th, or 12th grade.
7. INTERMEDIATE SHOWMANSHIP-Having completed the 7th, 8th, or 9th grade.
8. JUNIOR SHOWMANSHIP-Having completed the 4th, 5th, or 6th grade.
9. Champion Senior, Intermediate, and Junior Showman in each division will receive a trophy.
10. Purple showmanship ribbons will be awarded to those selected by the judge for showmanship honors.
11. An exhibitor may compete each year and be eligible to win a trophy.

NOTE: SHOWMANSHIP FOR BEEF, SWINE, & SHEEP-NEW FOR 2008

Beginning in 2008, an exhibitor may only win once in the Junior and Intermediate Levels. After winning showmanship in their age level, they will then compete in the next level the following year with the Senior Level being the exception.

Once an exhibitor wins each division, they will compete in a 'winner's circle'. Once in the 'winner's circle, they can continue to compete.

SHOWMANSHIP AWARDS SPONSORED BY:

Champion Junior & Senior Showman-Pilot Grove Savings Bank, Branch Offices in Packwood, Mt. Pleasant, Donnellson, Houghton, West Point and Pilot Grove.

Champion Intermediate Showman-Farmers Cooperative Association, Libertyville

HERDSMANSHIP AWARD

The Jefferson County Mutual Insurance Association, Fairfield will sponsor the herdsmanship awards. The purpose of these awards is to promote neatness and cleanliness of stalls, alleyways, and livestock in the exhibit barns during the County Fair. Safety of visitors while in the barns, as well as exhibitors and livestock will be stressed. A special committee will rate livestock exhibits on a 4-H Club or FFA Chapter basis during the fair. This committee will visit the livestock barns at least once a day, unannounced to evaluate each individual's animals and exhibit area. Individual exhibitor ratings will be grouped on a club or chapter basis to determine a final rating. The judging of the exhibits by committee will be based primarily on cleanliness of alleys, stalls, pens, arrangement of exhibits, neatness, appearance of animals, stall cards and attendant. A first place cash award and a second place cash award will be awarded at Award's Night in November.

National Code of Show Ring Ethics

Exhibitors of animals at livestock shows shall at all times deport themselves with honesty and good sportsmanship. Their conduct in this competitive environment shall always reflect the highest standards of honor and dignity to promote the advancement of agricultural education. This code applies to junior as well as open class exhibitors who compete in structured classes of competition. This code applies to all livestock offered in any event at a livestock show. In addition to the "IAFE National Code of Show Ring Ethics," fairs and livestock shows may have rules and regulations which they impose on the local, county, state, provincial and national levels.

All youth leaders working with junior exhibitors are under an affirmative responsibility to do more than avoid improper conduct or questionable acts. Their moral values must be so certain and positive that those younger and more pliable will be influenced by their fine example. Owners, exhibitors, fitters, trainers and absolutely responsible persons who violate the code of ethics will forfeit premiums, awards and auction proceeds and shall be prohibited from future exhibition in accordance with the rules adopted by the respective fairs and livestock shows. Exhibitors who violate this code of ethics demean the integrity of all livestock exhibitors and should be prohibited from competition at all livestock shows in the United States and Canada.

The following is a list of guidelines for all exhibitors and all livestock in competitive events:

1. All exhibitors must present, upon request of fair and livestock show officials, proof of ownership, length of ownership and age of all animals entered. Misrepresentation of Ownership, age, or any facts relating thereto is prohibited.

2. Owners, exhibitors, fitters, trainers, or absolutely responsible persons shall provide animal health certificates from licensed veterinarians upon request by fair or livestock show officials.

3. Junior exhibitors are expected to care for and groom their animals while at fairs or livestock shows.

4. Animals shall be presented to show events where they will enter the food chain free of volatile drug residues. The act of entering an animal in a livestock show is the giving of consent by the owner, exhibitor, fitter, trainer and/or absolutely responsible person for show management to obtain any specimens of urine, saliva, blood, or other substances from the animal to be used in testing. Animals not entered in an event which culminates with the animal entering the food chain shall not be administered drugs other than in accordance with applicable federal, state and provincial statutes, regulations and rules. Livestock shall not be exhibited if the drugs administered in accordance with federal, state, and provincial statutes, regulations and rules affect the animal's performance or appearance at the event. If the laboratory report on the analysis of saliva, urine, blood, or other sample taken from livestock indicates the presence of forbidden drugs or medication, this shall be prima facie evidence such substance has been administered to the animal either internally or externally. It is presumed that the sample of urine, saliva, blood, or other substance tested by the laboratory to which it is sent is the one taken from the animal in question, its integrity is preserved and all procedures of said collection and preservation, transfer to the laboratory and analysis of the sample are correct and accurate and the report received from the laboratory pertains to the sample taken from the animal in question and correctly reflects the condition of the animal at the time the sample was taken, with the burden on the owner, exhibitor, fitter, trainer, or absolutely responsible person to prove other wise. At any time after an animal arrives on the fair or livestock show premises, all treatments involving the use of drugs and/or medications for the sole purpose of protecting the

health of the animal shall be administered by a licensed veterinarian.

5. Any surgical procedure or injection of any foreign substance or drug or the external application of any substance (irritant, counterirritant, or similar substance) which could affect the animal's performance or alter its natural contour, confirmation, or appearance, except external applications of substances to the hoofs or horns of animals which affect appearance only and except for surgical procedures performed by a duly licensed veterinarian for the sole purpose of protecting the health of the animal, is prohibited.

6. The use of showing and/or handling practices or devices such as striking animals to cause swelling, using electrical contrivance, or other similar practices are not acceptable and are prohibited.

7. Direct criticism or interference with the judge, fair or livestock show management, other exhibitors, breed representatives, or show officials before, during, or after the competitive event is prohibited. In the furtherance of their official duty, all judges, fair and livestock show management, or other show officials shall be treated with courtesy, cooperation and respect and no person shall direct abusive or threatening conduct toward them.

8. No owner, exhibitor, fitter, trainer, or absolutely responsible person shall conspire with another person or persons to intentionally violate this code of ethics or knowingly contribute or cooperate with another person or persons either by affirmative action or inaction to violate this code of ethics. Violation of this rule shall subject such individual to disciplinary action.

9. The application of this code of ethics provides for absolute responsibility for an animal's condition by an owner, exhibitor, fitter, trainer, or participant whether or not he or she was actually instrumental in or had actual knowledge of the treatment of the animal in contravention of this code of ethics.

10. The act of entering an animal is the giving of consent by the owner, exhibitor, fitter, trainer, or absolutely responsible person to have disciplinary action taken by the fair or livestock show for violation of this Code of Show Ring Ethics and any other rules of competition of the fair or livestock show without recourse against the fair or livestock

show. The act of entering an animal is the giving of consent that any proceedings or disciplinary action taken by the fair or livestock show may be published with the name of the violator or violators in any publication of the International Association of Fairs and Expositions, including Fairs and Expositions and any special notices to members.

11. The act of entering of an animal in a fair or livestock show is the giving of verification by the owner, exhibitor, fitter, trainer, or absolutely responsible person that he or she has read the IAFE National Code of Show Ring Ethics and understands the consequences of and penalties provided for actions prohibited by the code. It is further a consent that any action which contravenes these rules and is also in violation of federal, state, or provincial statutes, regulations, or rules may be released to appropriate law enforcement authorities with jurisdiction over such infractions.

4-H AND FFA BEEF CATTLE

Superintendents: Carrol Beasley, Kendra Hellweg, Jared Schultz, Steve Myers

Beef Judge: Bob Sunquist

Bucket Bottle-Interview Judge: Tom Miller

1. General rules, regulations and health requirements apply to this department.
2. Each exhibitor may weigh, ear tag, and enroll on Form 106 up to six (6) market animals (steers & heifers) at the 4-H/FFA Beef Weigh-In. A maximum of three (3) may be exhibited at fair.
3. **The Fair entry fee is \$5.00 per head and must be paid with the June Fair entries.**
4. **All exhibitors must read and sign the National Code of Show Ring Ethics with Fair Entry Form Due June 6th.**
5. **All Breeding Beef animals must be checked in with Beef Superintendents.**
6. Market beef exhibits will be weighed on State approved scales at the fairgrounds.
7. Market animals will be weighed one time only, no reweighing to make class.
8. At fair weigh-in, registered steers must present the original registration papers at check-in time. (No Copies) Steers without

necessary registration papers will be shown in the crossbred division. Tattoos will be checked.

9. Stall assignments will be designated by the superintendents.
10. **GROOMING CHUTES** will not be allowed in the beef barns except on Show Day. Chutes must be placed in stalls, out of alley ways and must be removed from the beef barns immediately after the beef show.
11. **Common bedding will be used in the barns for all beef cattle.** The stalls will initially be bedded by the Jefferson County Fair Board and the fee is included in the Entry fee. **NO ALTERNATIVE BEDDING WILL BE ALLOWED.** A stockpile of bedding will be available for Exhibitors to freshen stalls during fair. The Jefferson County Fair Board will clean out stalls after the fair.
12. Tack stalls will be designated and show boxes must be placed in the designated locations. Show boxes cannot be placed with the exhibitors cattle. **NO FEED STORAGE ALLOWED IN BEEF BARNs.** Feed cannot be placed in the designated Tack Stall locations.
13. **Only one fan per animal will be allowed.** All fans must have protective screen and have safe wiring. **THE USE OF BUTT FANS IS PROHIBITED IN ALL BEEF BARNs.** All fans must move air in the same direction.
14. **RATE OF GAIN AWARDS** will be given to the top five (5) Rate Of Gain Calves (Steers and/or Heifers).
15. **Overall Grand Champion and Overall Reserve Grand Champion Market Beef Award.**
The following will compete:
 - Champion and Reserve Farm Raised Market Animal
 - Champion and Reserve Market Heifer.**Champion and Reserve from each breed class.**
Champion and Reserve Crossbred Market Animal

NOTE - AT CHECK-IN, ALL ANIMALS MUST BE WEIGHED OR TATTOOS CHECKED. (ALL ANIMALS RUN THROUGH EITHER WEIGH-IN CHUTE OR CHUTE TO CHECK TATTOO.)

16. All market steers/heifers weighing less than 850 pounds will be shown in a special feeder class.
17. Animals shown in the feeder class will not be eligible for Overall Grand Champion & Reserve Grand Champion Market Beef Award.
18. Special divisions will be provided for registered steers. Entry in these classes must follow the Iowa Junior Beef Breed Association rules. To be eligible for the special breed division, breed information of the sire's name and registration number must be provided at the December weigh-in and the calf must have a tattoo to read at the 4-H/FFA weigh-in.
19. All breed and crossbred market heifers will be shown together.
20. Heifers showing in the market heifer classes will not be eligible to show in the breeding beef classes.
21. Weight divisions will be determined by the superintendents with a first and second place steer selected in each weight division to compete for the respective Class Champion and Reserve Champion.
22. **Calves will be shown in classes determined by breed, sex, and weight. Numbers of classes will be determined by fair weigh-in weights.**
23. **It is the responsibility of the exhibitor/4-H family to monitor the show's progress and be ready to enter the ring when the class is called; after the final call, judging will commence.**
24. Superintendents have the right to combine classes due to lack of numbers. **If there are less than three (3) calves per breed the superintendents will make an All Other Breeds (AOB) class.**

25. **Do not water cattle after 12:00 P.M. (midnight) the night preceding the sale.**
26. The decisions of the superintendents are final.

FARM RAISED MARKET BEEF DIVISION

General rules, regulations and health requirements apply to this department.

1. Calves entered in this division are not eligible to compete in other beef divisions **except Champion & Reserve Champion Farm Raised will/can compete for Overall Grand Champion & Overall Reserve Grand Champion Market Beef Award.**
2. Calves must be weighed and identified at 4-H/FFA Beef weigh-in and designated for the Farm Raised Division. **The calf is not eligible to change to another Division.**
3. The calf must have been born on the Exhibitor's family farm and the Exhibitor and/or family must have owned the Dam at time of calf's birth.
4. Steers and heifers will compete in separate classes.

CLUB GROUP

1. A club group will consist of three (3) market steers of any breed exhibited from one 4-H Club or FFA Chapter. Market beef heifers cannot be included in club group.
2. Each club or chapter is limited to one (1) group.

ADVANCED CATTLE FEEDING (PEN OF 3 HEAD)

1. General rules, regulations and health requirements apply to this department.
2. A member may feed from three (3) to five (5) head, either steers or heifers, not mixed.
3. Animals to be weighed in and ear tagged at regular beef weigh-in.
4. Animals will be exhibited at the county fair in a pen of three.

5. Animals do not need to be broke to lead or fitted. However, they must not be wild. Superintendent of beef barn will determine animal's disposition.
6. Judging will be conference style with cattle in pens.
7. Accurate feed records must be kept and brought to the fair as part of the exhibit. Rate of gain and cost per pound of gain will be considered in placings. **Must be posted on pen after final weigh-in.**
8. All 3 animals will be taken home. Exhibitor may sell one (1) ribbon for the pen. We will sonoray all three (3) animals and carcass data will be collected on Wednesday, June 25th.
9. Steers enrolled at weigh-in as market beef cannot be shown in the advanced cattle feeding project or visa versa at the fair.
10. **NOTE – WINNER OF POLLED HEREFORD CLASSES (CHAMPION AND RESERVE CHAMPION HEIFER, CHAMPION AND RESERVE COW/CALF) WILL RECEIVE A TROPY AND SAVINGS BOND. NO AWARDS WILL BE PRESENTED IF LESS THAN 3 ENTRIES IN CLASS.**

MARKET BEEF CLASSES DEPARTMENT 1

- Class MH-Lot 1** Individual Market Heifers
- Class MS-Lot 1** Individual Market Steer, Angus
- Class MS-Lot 2** Individual Market Steer, Charlais
- Class MS-Lot 3** Individual Market Steer, Chianina
- Class MS-Lot 4** Individual Market Steer, Gelbvieh
- Class MS-Lot 5** Individual Market Steer, Hereford
- Class MS-Lot 6** Individual Market Steer,
Limousin
- Class MS-Lot 7** Individual Market Steer, Main-
Anjou
- Class MS-Lot 8** Individual Market Steer, Salers
- Class MS-Lot 9** Individual Market Steer,
Shorthorn
- Class MS-Lot 10** Individual Market Steer,
Simmental

- Class MS-Lot 11** Individual Market Steer, Belgian Blue
Class MS-Lot 12 Individual Market Steer, Other Breeds
Class MS-Lot 13 Individual Market Steer, Crossbred
Class FR-Lot 1 Farm Raised Market Animal Class
Class CG-Lot 3 Club Group
Class CF-Lot 32 Advanced Cattle Feeding (Pen of 3)

BUCKET BOTTLE CALVES

1. General rules, regulations and health requirements apply to this department.
2. Project open to all 4-H/FFA members enrolled in Beef or Dairy projects.
3. Calf/calves must be identified on 4-H Form JCIDSA at the Jefferson County Extension Office by May 15.
4. An exhibitor may identify up to three (3) calves. A maximum of only two (2) calves may be exhibited at the fair. Only one calf will be eligible for a trophy. It is eligible to be shown only in the Bucket-Bottle class. Calves identified as Bucket-Bottle calves may only be shown in Bucket-Bottle Classes.
5. Class is open to any newborn or orphan heifer or male calf. Male calves may be shown as a steer only. **All male calves must be castrated by May 15.**
6. Breed of calf can be beef, dairy or crossbred. **Please Note: Beef showmanship rules will apply for all.**
7. Must have been calved between Jan. 1 and April 30 of the current year.
8. If purchased, the calf must be purchased and in possession of member within two (2) weeks of birth.
9. Calf must be bucket or bottle fed (no nursing permitted after purchase).
10. Calves will be shown at halter using beef showmanship guidelines.
11. Entries will be weighed on fair livestock scale on entry day during beef weigh-in.

12. Classes will be determined by the Supt. depending on number of entries. Classes will be divided by age of member and age of calves.

13. The fitting and showing of the calf should be according to beef guidelines with emphasis on what the member has learned.

14. Members may keep animals for breeding heifer, market steer or market heifer class in the following year, sell at private treaty or have the option to sell calves that are exhibited at the Fair Livestock Auction.

15. No show sticks or brushes in show-ring on bucket-bottle calf classes.

16. The committee will select a Jr., Int., & Sr. champion. These 3 winners will show for overall Champion.

17. Evaluation of the project will be based on:

- a. Record Evaluation..... 200 points
 - b. Interview with Committee. 200 points
 - c. Show ring Evaluation..... 100 points
- Total Possible Points 500 points

18. There will not be a special showmanship class for Bucket Bottle because it is already included in the point system.

19. All 4-H members must wear a 4-H shirt during the bucket/bottle interview.

BUCKET BOTTLE CALF CLASSES

Class BS-Lot 4 1st year calves born between (1/1/08-3/1/08) shown by Senior members

Class BS-Lot 5 1st year calves born between (3/2/08-4/30/08) shown by Senior members

Class BI-Lot 4 1st year calves born between (1/1/08-3/1/08) shown by Intermediate members

Class BI-Lot 5 1st year calves born between (3/2/08-4/30/08) shown by Intermediate members

Class BJ-Lot 4 1st year calves born between (1/1/08-3/1/08) shown by Junior members

Class BJ-Lot 5 1st year calves born between (3/2/08-4/30/08) shown by Junior members

BUCKET-BOTTLE CALF AWARDS

Penn Workers 4-H Club, will sponsor a trophy to the Overall Champion Bucket-Bottle Calf.

Graber's Service, Lockridge, will sponsor trophies to the Reserve Champion Junior Bucket-Bottle Calf and Reserve Champion Intermediate Bucket-Bottle Calf.

CL Services – Chuck Ledger, will sponsor a trophy to the Reserve Champion Senior Bucket-Bottle Calf.

Big T Exotics of Lockridge, will sponsor a trophy to the Senior Champion Bucket Bottle Calf.

Joe Freeman-Crows Seeds will sponsor trophies to the Junior Champion Bucket-Bottle Calf and Intermediate Champion Bucket-Bottle Calf.

RETURN BUCKET-BOTTLE CLASS (ANIMALS EXHIBITED IN PRIOR YEARS IN A BUCKET BOTTLE CLASS)

NOTE: Market steers and heifers must have been weighed and ear tagged during weigh-in in December.

1. Classes will be designated by superintendents.
Classes may be combined.
2. Trophies will be given for champion in each class along with a ribbon.
3. All ages will show in each class.
4. 4-H'er must designate at weigh-in time if animal will show in regular class or return bucket bottle.
5. Return Bucket Bottle class will show after the Bucket Bottle Class

CLASSES - RB

Lot 1 Returning Bucket/Bottle Market Steer

Lot 2 Returning Bucket/Bottle Market Heifer

Lot 3 Returning Bucket/Bottle Breeding Heifer

Lot 4 Returning Bucket/Bottle Cow/Calf

RETURN BUCKET-BOTTLE AWARDS

Richard & Kim Swanson will sponsor a trophy to the Champion Return Bucket-Bottle Cow/Calf.

Graber Services Ltd., Lockridge, will sponsor a trophy to the Champion Return Bucket-Bottle Breeding Heifer.

Brighton Ag, LLC, will sponsor a trophy to the Champion Return Bucket-Bottle Market Steer.

Fairfield FFA will sponsor a trophy to the Champion Return Bucket-Bottle Market Heifer.

BREEDING BEEF (HEIFERS AND COWS)

1. General rules, regulations, and health requirements apply to this department.
2. This division is open to breeding beef females.
3. A member cannot exhibit more than a total of four (4) breeding beef animals, with a maximum of two (2) in any one class.
4. Purebred and grade animals will be shown in the same classes by breed, with a crossbred class for animals not meeting breed requirements.
5. Stall assignments will be designated by the superintendents.
6. Heifers showing in the breeding beef classes will not be eligible to show in the market heifer classes.
7. A yearling heifer must be born between January 1, 2007 and January 1, 2008.
8. All heifers and cows with calves must be shown in the cow and calf class.
9. The calf, regardless of sex, must be shown with the cow.
10. Classes may be divided at the discretion of the superintendent.
11. Birth date and breed must be shown on entry blank
12. If questionable situations arise, final breed determination will be made by superintendents.
13. Any class with less than three (3) entries may be combined with another class at the discretion of the Beef Superintendents.

14. First place breeding beef heifer in each breed will compete for Champion Breeding Beef Heifer.
15. First place breeding cow & calf in each breed will compete for Champion Breeding Cow and Calf.
16. Breed Champion will be selected for each breed. This selection will be made at the end of each Breed Show.

	Yearling	Cow Calf
	Class Y	Class CC
	Lot	Lot
Angus	5	7
Hereford	8	10
Polled Hereford	11	13
Shorthorn	14	16
Simmental	17	19
Chianina	20	22
Limousin	23	25
Charolais	26	28
Crossbred	29	31
Maine-Anjou	32	34
Appendix Shorthorn	35	37

BREEDING BEEF AWARDS

Donald Bennett Memorial Award

The Donald Bennett Family will sponsor a savings bond award and trophy to the exhibitor of the Champion Angus Female.

Packwood Trojans 4-H Club, Packwood, will sponsor a trophy to a Champion Breeding Beef Heifer.

Bud and Beth Smith, will sponsor a trophy to the Reserve Champion Breeding Beef Heifer.

Jefferson County Equipment – Chad Reed

Jefferson County Equipment will sponsor trophies to the Champion Cow/Calf and to the Reserve Champion Cow/Calf.

BEEF SHOW ORDER

1. Breeding Beef Heifer by Class Number
2. Champion & Reserve Breeding Beef Heifer
3. Cow/Calf by Class Number
4. Champion & Reserve Cow/Calf
5. **Champion & Reserve Pen of 3 Advanced Cattle Feeding Conference Judging**
6. Farm Raised Market (Steers & Heifers)
7. Overall Grand & Reserve Champion Market Animal and Champion & Reserve Farm Raised Animal.

MARKET ANIMAL AWARDS

Jerry Steele, Lockridge, Steele Livestock Equip, will sponsor trophies to the Overall Grand Champion Market Animal and the Overall Reserve Champion Market Animal.

FARM RAISED MARKET BEEF AWARDS

Jerry Steele, Lockridge, Steele Livestock Equip., will sponsor a trophy to the Champion Farm Raised Market Animal.

Jeff Engwall Family, Fairfield, will sponsor a trophy to the Reserve Champion Farm Raised Market Animal.

ADVANCED CATTLE FEEDING AWARDS

First National Bank, Fairfield, will sponsor trophies for the Champion Pen of 3 Advanced Cattle Feeding and Reserve Champion Pen of 3 Advanced Cattle Feeding.

OTHER BEEF AWARDS

Reiff Grain & Feed-Rate of Gain

Cash awards will be presented to the top five rate-of-gain market animals by Reiff Grain & Feed as follows:

1st-\$30, 2nd-\$25, 3rd-\$20, 4th-\$15 and 5th-\$10.

The Jefferson County Mutual Insurance Assoc., Fairfield will sponsor a hat to exhibitors of Champion animals.

4-H AND FFA DAIRY DEPARTMENT 3

Superintendents: Richard Heald & Ben Godwin
Judge:

DAIRY HEIFERS OR COWS

1. General rules, regulations and health requirements apply to this department.
2. A member cannot exhibit more than six (6) animals in this division with a maximum of 2 in any one class. Purebred and grade dairy animals will be shown together.
3. Classes to be set by age only. Breed must be indicated on entry blank.

CLASS	AY	BS	GU	HO	JE	MS
Jr. Heifer Calves- Born Dec. 1, 2007 or after	33	33	33	33	33	33
Sr. Heifer Calves- Born Sept. 1, 2007 - Nov. 30, 2007	34	34	34	34	34	34
Jr. Yearling Heifers-Born Mar. 1, 2007-Aug. 31, 2007	35	35	35	35	35	35
Sr. Yearling Heifers- Born Sept.. 1, 2006 – Feb. 29, 2007	36	36	36	36	36	36
2-Year-Old Cows- Born Sept. 1, 2005 – Aug. 31, 2006	37	37	37	37	37	37
3-Year-Old & Older Cows- Born Before Sept. 1, 2005	38	38	38	38	38	38

DAIRY AWARDS

A trophy will be presented to the Supreme Champion Dairy Animal.

The Jefferson County Mutual Insurance Assoc., Fairfield, will sponsor hats to all exhibitors of champion animals.

4-H AND FFA DAIRY GOATS

Superintendents: Richard Heald & Ben Godwin

Judge: Doug Glosser

General rules, regulations and health requirements apply to this department.

1. A member cannot exhibit more than a total of (6) animals with a maximum of two (2) per class.
2. Classes are limited to does only - NO BUCKS
3. Does over 24 months of age and never freshened cannot be shown.
4. Dairy Goats in milk must be milked out between 7 & 9 a.m. the day of the show.
5. All dairy goats must be hornless.
6. All sexually intact goats that are housed with sheep must have an individual scrapie flock of origin ID tag. Proof of identification will be verified on the June Animal entry day.

CLASSES 05-111 Hobby Goat Class

JUNIOR DOES

Under 24 months of age not in milk or ever freshened

CLASS	AL	CR	LA	NU
Under 4 Months	40	40	40	40
4 Months & Under 8 Mo.	41	41	41	41
8 Months & Under 12 Mo.	42	42	42	42
12 Months & Under 24 Mo.	43	43	43	43

SENIOR DOES

In milk or have freshened

CLASS	AL	CR	LA	NU
24 Months & Under	44	44	44	44
24 Months & Under 36 Mo.	45	45	45	45
Over 36 Mo.	46	46	46	46

GOAT SHOW ORDER

1. Hobby Goat
2. Junior Does
3. Champion Junior Does
4. Senior Does
5. Champion Senior Does
6. Best Doe of Show
7. Senior Showmanship
8. Intermediate Showmanship
9. Junior Showmanship

4-H AND FFA MEAT GOATS DEPARTMENT 4

**Superintendent: Denny Thomes, Richard Heald,
Tim Pacha**

Judge: Douglas Glosser

General rules, regulations and health requirements apply to this department.

1. Meat goats must be does or castrated male goats born between Aug. 1, 2007 and April 1, 2008.
2. Goats must be disbudded/dehorned only if going to State Fair. Wethers are to be clipped short 21 days before show. Nannies & Billys have coats cleaned and show clipped, hooves properly trimmed and filed. Must be shown with collar.
3. Meat goats must weigh a **minimum of 40 pounds** at show time. All meat goats will be weighed before being allowed to enter show ring. Wethers will be weighed at sheep weigh in.
4. Health requirements: Any evidence of foot rot, sore mouth, breathing problems, pink eye, open sores or any other contagious disease will eliminate the animal from the show. All sexually intact goats that are housed with sheep must have an individual scrapie flock of origin ID tag. Proof of identification will be verified at the June Animal entry day.
5. Member may exhibit two (2) nanny kids and two (2) wether kids or three (3) nannies no wethers or three (3) wethers no nannies. 1 year old or older nanny. 1 billy born 8/1/07 – 4/1/08.
6. Entries must be identified by May 15 on our county livestock ID form.
7. Pygmy goats may not be entered.
8. Meat goats will show after the sheep show. Classes will be broken out according to age/weight of animal depending on number of entries. Superintendent will combine classes in the event that there are less than three (3) entries per class.

CLASSES - MG

Lot 1 Meat goat born 8/1/07-10/31/07

Lot 2 Meat goat born 11/1/07-12/31/07

Lot 3 Meat goat born 1/1/08-2/28/08

Lot 4 Meat goat born 3/1/08-4/1/08

Rate Of Gain Class

GOAT AWARDS

Filson Custom Baling, will sponsor a trophy for the Champion Wether.

A&K Feeds, will sponsor a trophy for the Champion Nanny.

Big T Exotic, will sponsor a trophy for the Champion Billy.

Iowa Meat Goat Association, will sponsor a trophy for the Grand Champion.

Gavin & Darla Stacy, TAC Manufacturing, will sponsor a trophy for Rate of Gain.

The Jefferson County Mutual Insurance Assoc., Fairfield, will sponsor hats to all exhibitors of champion animals.

4-H AND FFA SHEEP DEPARTMENT 17

Superintendents: Tim Pacha, Mike Filson, Bryan Lauderman, Mike Burkhalter

Judge: Verlyn Finke

Bottle Lamb Interviews: Jeremy Atwood

General rules, regulations & health requirements apply to this department. All sexually intact sheep must have an individual Scrapie Flock of Origin identification tag. All sexually intact goats must be identified with an individual Scrapie Flock of Origin identification tag or by an official tattoo registered with USDA (to register, call 1-866-USDA-TAG).

PUREBRED LAMBS

1. Entries limited to two (2) purebred ewes per class & one (1) purebred ram lamb.
2. Lambs entered in purebred classes cannot be shown in market lamb division.
3. Purebred entries will be shown by breed.

MARKET LAMBS

1. Market lambs must be shorn to exhibit.
2. Market lamb entries open to either ewe or wether lamb born after January 1, 2008. Ewe and wether lambs will show in separate classes. A combined total of three (3) lambs may show.
3. Lambs will be divided into classes by weight at the discretion of the superintendent.
4. Commercial ewes cannot be shown as individual market lambs or in the pen of three.
5. May weigh up to twelve (12) lambs.

MARKET FEEDER LAMB CLASS

1. Market lambs weighing under minimum weight, determined by superintendent, will be shown in a market feeder lamb class.
2. Animals shown in the feeder class will not be eligible for grand champion.
3. Animals in this class may sell in the 4-H/FFA livestock auction as feeder lambs.

BOTTLE LAMB

1. General rules, regulations, and health requirements apply to this department.
2. Project open to 4-H members, grades 4 to 12.
3. Bottle Lamb record form packet may be picked up at the Jefferson County Extension Office.
4. Class is open to any newborn or orphan male or female lamb, born after January 1, and before April weigh-in date of the current year.
5. Male lambs must be **castrated** and have **tail docked** by April weigh-in date.
6. 4-H'er may identify and ear-tag up to three (3) lambs at the April Lamb weigh-in. Only one (1) lamb may be exhibited at the fair.
7. Bottle Lambs will be ear-tagged at April weigh-in with an ear-tag, different in color than the Market Lamb ear-tag.
8. Lambs need to be separated from mother within 48 hours of birth. No nursing permitted after 48 hours.
9. Lambs identified in the Bottle Lamb Project may not be shown in the Market Lamb Class and lambs identified in the Market Lamb Project may not be shown in the Bottle Lamb Class.

10. Bottle Lambs shown at the Jefferson County Fair may be sold in the 4-H Livestock auction, provided they are market weight, **minimum weight 90 pounds**.
11. Members may keep female Bottle Lambs and exhibit in the following year's Fair Return Bottle Ewe Class.
12. Entries will be weighed on Fair entry day and classes determined by the superintendents. Classes will be divided by age of exhibitor and weight of lambs.
13. The fitting and showing of the lambs should be according to sheep guidelines with emphasis on what the member has learned.
14. Lambs must be shorn at least two (2) weeks prior to show day.
15. There will not be a special showmanship class for Bottle Lambs because this is already included in the point system.
16. Evaluation of the project will be based on:
 - Record Evaluation.....100 points
 - Interview.....100 points
 - Show ring Evaluation.....200 points

CLASSES

- Class PB-Lot 60** Purebred Ram Lamb (1 entry)
Class PB-Lot 61 Purebred Ewe Lamb (2 entries)
Class PB-Lot 62 Purebred Yearling Ewe (2 entries)
Class FL-Lot 70 Market Feeder Lamb Class
Class FP-Lot 71 Market Feeder Pen
Class CE-Lot 63 Commercial Ewe Lamb (1 entry)
Class CE-Lot 64 Commercial yearling Ewe (1 entry)
Class PT-Lot 65 Pen of three market lambs (1 entry)
Class ME-Lot 66 Individual Market Ewe (limit 3 entries)*
Class MW-Lot 67 Individual Market Wether (limit 3 entries)*
Class BL-Lot 68 Bottle Lamb (limit 1 entry)
Class BL-Lot 69 Return Bottle Lamb (limit 1 entry)

* A combined total of three (3)

SHEEP SHOW ORDER

1. Purebreds – Ram and Ewes
2. Yearling Commercial Ewes
3. Commercial Ewes
4. Champion Breeding Ewe
5. Individual Market Ewes
6. Individual Market Wether
7. Champion Individual Market Lamb
8. Pen of Three (3) Market Lambs
9. Champion Pen of Three (3) Market Lambs
10. Champion Feeder Pen
11. Senior Showmanship
12. Intermediate Showmanship
13. Junior Showmanship
14. Bottle Lamb
15. Return Bottle lamb
16. Clover Kids Lamb Exhibit

SHEEP AWARDS

Mike Burkhalter, will sponsor a trophy to the Grand Champion Market Lamb.

Mark Goehring, will sponsor a trophy to the Champion Purebred Ewe.

Friends of Jefferson County Fair will sponsor a trophy to the Champion Purebred Ram.

Ray & Letha Goehring, will sponsor a trophy to the Champion Commercial Ewe.

Carroll Horton Memorial Award, Bev Horton, Lockridge, will sponsor a trophy to the Top Rate-of-Gain Lamb.

Larry Horton Family, Lockridge, will sponsor a trophy to the Champion Pen of Three Lambs.

Mark Goehring will award \$100 to the Champion Feeder Pen of lambs.

Farm Bureau Financial Services, Patrick & Alex Kessel, Fairfield, will sponsor a trophy to the Reserve Champion Pen of Three Lambs

Fairfield FFA, will sponsor a trophy to the Reserve Champion Market Lamb.

Heald Construction, Packwood, will sponsor a trophy to the Champion Bottle Lamb.

Packwood Trojans 4-H Club, Packwood, will sponsor a trophy to the Reserve Champion Bottle Lamb.

The Jefferson County Mutual Insurance Assoc., Fairfield, will sponsor hats to all exhibitors of champion animals.

4-H AND FFA SWINE DEPARTMENT 18

Superintendents: Tim Pacha, Mike Filson, Bryan Lauderman, Allen Melcher

Judge: Tom Baas

1. General rules, regulations and health requirements apply to this department.
2. Market pigs must have been farrowed since January 1, 2008. Any breed or cross may be shown.
3. Pen of three consists of three (3) pigs of either sex.
4. **ALL MARKET PIGS MUST HAVE BEEN EAR-TAGGED WITH THE COUNTY 4-H TAG AND ENROLLED ON FORM 4-H 106-LS AT THE WEIGH-IN DAY IN MARCH.**
5. A member may **ear-tag** up to ten (10) pigs. Maximum weight limit of 80 pounds.
6. **EACH EXHIBITOR WILL WEIGH 3 PIGS. THE DERBY PIG MUST BE SELECTED FROM THESE THREE PIGS.**
7. A maximum of five (5) pigs may be exhibited at County Fair.
8. Minimum weight limit for individual market pigs at fair weigh-in is 200 lbs.
9. State Approved Scales at the fairgrounds will be used and be final.
10. **DO NOT BRING PIGS TO FAIR WEIGHING UNDER 200 LBS.**
11. **Fair class weight divisions will be determined by the Superintendents.**

12. **SWINE SHOW DAY** - please do not move pigs to and from wash rack after the start of the swine show.

13. **SALE DAY** - please do not clean pens until the swine are loaded in order to keep the aisles open.

14. All swine exhibits not selling will be released at 8:00 p.m. Saturday, June 28.

CARCASS DERBY RULES

1. Each exhibitor must consign one (1) pig to the Derby class.
2. The Derby pig entry can only be shown in the Derby class.
3. Ribbons will be awarded to the top ten (10) live derby placings.
4. Derby pigs may be either gilts or barrows.
5. The rate-of-gain will be painted on the rump of the pig.
6. Carcass placings will be determined using the sonoray method.
7. Placings will be made on lean gain per day of test.
8. \$480 to be prorated to the top ten (10) pigs in the Carcass Derby Contest as follows: \$75, \$70, \$55, \$50, \$45, 40, \$40, \$35, \$35, \$35
9. All livestock bids must be in by 5:00 pm, Friday, June 27th.

CLASSES

- CG -LOT 50** Grade Commercial Gilt (1 entry)
PT - LOT 51 Market Pen of Three (1 entry)
MP -LOT 53 Individual Market Pigs (3 entries)
CD -LOT 54 Carcass Derby Class (1 entry)

REQUIRED CLASS

- PB - LOT 55** Purebred Swine Class

HOG SHOW ORDER

1. Commercial Gilts
2. Pen of Three (3)
3. Champion Pen of Three (3)
4. Individual Market Pig
5. Champion Individual
6. Rate of Gain
7. Derby
8. Purebred Class

9. Sr. Showmanship
10. Int. Showmanship
11. Jr. Showmanship

SWINE AWARDS

Jefferson County Pork Producers.

The Jefferson County Pork Producers will sponsor a trophy to the exhibitor of the first place Carcass Derby Pig and sponsor a \$480.00 award for premiums to be pro-rated to the top ten (10) Carcass Derby Class placings: 1st=\$75, 2nd=\$70, 3rd=\$55, 4th=\$50, 5th=\$45, 6th=\$40, 7th=\$40, 8th=\$35, 9th=\$35, 10th=\$35.

Brighton Ag, LLC will sponsor a trophy to the exhibitor of the Grand Champion Market Pig.

Larry Lauderman Family, Pleasant Plain

will sponsor a trophy for the Champion Commercial Gilt.

Mycogen Seeds, Kurt Ledger will sponsor a trophy for the Champion Pen of Three Market Pigs.

Dan's Water Service-Dan and Carolyn

Schlicher, Brighton will sponsor a trophy to the Reserve Champion Pen of Three Market Pigs.

Farm Bureau Financial Services, Patrick & Alex Kessel, Fairfield will sponsor a trophy for the Reserve Champion Market Pig

Fairfield FFA will sponsor a trophy to the Reserve Champion Commercial Gilt.

The Jefferson County Mutual Insurance Assoc.,

Fairfield, will sponsor a hat to exhibitors of champion animals.

4-H AND FFA HORSE DEPARTMENT 9

Superintendent: Steve Fritchen, Korwin Hinshaw, Bryan Lauderman, Linda McIntire, Ron Uber
Judge:

HORSE & PONY

1. General rules, regulations & health requirements apply to this department.
 - *ALL HORSES THAT ARE BROUGHT TO THE FAIRGROUNDS MUST HAVE A HEALTH PAPER. NO COGGINS TEST IS REQUIRED, BUT IS RECOMMENDED.**
 2. Each exhibitor is limited to one horse per CLASS. There is no limit on total number of horses or ponies that an exhibitor can bring.
 3. A member must show in a showmanship class and level 1, 2, and 3 horsemanship in order to show in any other class at Fair.
 4. This division is open to 4-H & FFA members who have properly enrolled their projects with their respective department.
 - 5. All 4-H members who wish to show at the Jefferson County Fair must attend, and bring a horse to, at least one horse workout practice prior to Fair.**
 6. This division will be divided into sections for horses and ponies. Foals must have been born after January 1, 2008. Yearlings must have been born between January 1, and December 31, 2006. Two year olds must have been born between January 1, and December 31, 2005.
 7. NOTE: All halter classes will be shown first, followed by showmanship. All classes will be shown in the outside show ring.
 8. NO STALLIONS OTHER THAN FOALS ARE TO BE SHOWN.
 9. Members exhibiting in the Performance Division must enter the ring under control and wait until the gate is closed before making their run. Members will also DISMOUNT before they leave the arena.
 10. Horses and ponies may be stalled on the fairgrounds during the fair in assigned stalls. Any horse or pony not being stalled on the fairgrounds may arrive the day of the show.
- IF HORSES ARE KEPT ON GROUNDS:**
- Horses and ponies must be exercised twice a day.
 - Exercise area will be the arena.
 - All horses and ponies must be led to and from the exercise area.

- No riding or sitting on the horse or pony while in the building.
 - All horses and ponies that are kept on the grounds must be registered on the member's I.D. sheet.
 - No double riding will be allowed at any time!
 - **ALL HORSES THAT ARE KEPT ON GROUNDS, ARE THE RESPONSIBILITY OF THE MEMBER.**
11. Measurements may be taken between 7:00 a.m. & 8:00 a.m. The judge's decision is final on all heights.
 12. Judging in all classes will be placed as blue, red or white ribbon.
 13. A separate entry is required for each class entered.
 14. **Horse Helmet Rules:** All 4-H youth must wear American Society of Testing Materials (ASTM) and Safety Engineering Institute (SEI) approved protective head gear when mounted and riding in any 4-H horse riding activity. Jefferson County Fair, Iowa State Fair and Iowa State University make no representation or warranty, express or implied, about any protective headgear, and cautions riders that death or serious injury may result despite wearing such headgear as all equestrian sports involve inherent dangerous risk and as no helmet can protect against all foreseeable injuries.
 15. **HORSEMANSHIP CLASS, HORSE AND PONY UNDER SADDLE (WESTERN) CLASS, AND HORSE AND PONY EQUITATION (WESTERN) CLASS WILL BE JUDGED IN JUNIOR, INTERMEDIATE, AND SENIOR LEVELS. ALL WILL ENTER THE RING FOR THAT CLASS TOGETHER. PLEASE NOTE CHANGE WHEN ENTERING CLASSES AND INDICATE ON ENTRY FORM WHAT LEVEL YOU ARE IN.**
 16. All dogs must be kept on leashes at all times.
 17. No alcoholic beverages allowed on show grounds.

PONY DIVISION

CLASS – PD

LOT 70 Pony Foals

LOT 71 Pony Yearling (will mature under 14.0)

LOT 72 Pony at halter (14.0 and under)

HORSE DIVISION

CLASS – HD

LOT 80-Horse Foals (Quarter & Stock Horse Type)

LOT 81-Yearling Horse (Quarter & Stock Horse Type) (will mature 14.1 and over)

LOT 82-2 Year Old Horse at Halter (Quarter & Stock Horse Type) (will mature 14.1 and over)

LOT 83-3 Year Old Horse at Halter (Quarter & Stock Horse Type)

LOT 84-4 Year Old and Older Horse at Halter (Quarter & Stock Horse Type)

LOT 86-Age 0-3 All Other Breeds at Halter (Not Quarter & Stock Horse Type)

LOT 87-4 Year Old and Older All Other Breeds at Halter (Not Quarter & Stock Horse Type)

CLASS JS-LOT 89 Junior Showmanship (Required for 4th, 5th and 6th graders)

CLASS IS-LOT 90 Intermediate Showmanship (Required for 7th, 8th & 9th graders)

CLASS SS-LOT 91 Senior Showmanship (Required for 10th, 11th and 12th graders)

*** CLASSES 86-87 ARE NEW CLASSES FOR ALL OTHER BREEDS THAT ARE NOT QUARTER HORSE, PAINT, OR APPALOOSA STOCK-TYPE BUILD. (EXAMPLES – ARAB, TENNESSEE WALKER, OR GAITED HORSES, ETC.)**

SADDLE PLEASURE DIVISION

CLASS – SP

LOT 92 Hunt Seat Pony Equitation - all ages of riders

LOT 93 Hunt Seat Pony Pleasure - all ages of riders

LOT 94 Hunt Seat Horse Equitation- all ages of riders

- LOT 95 Hunt Seat Horse Pleasure- all ages of riders**
- LOT 96 Trail Class Jr. members**
- LOT 97 Trail Class Int. members**
- LOT 98 Trail Class Sr. members**
- LOT 99 Pony Equitation Under Saddle (Western) - all ages of riders**
- LOT 100 Pony Pleasure Under Saddle (Western)-all ages of riders**
- LOT 101 Horse Equitation Under Saddle (Western) - all ages of riders**
- LOT 102 Horse Pleasure Under Saddle (Western)-all ages of riders**
- LOT 103 Level 1 Horsemanship Class- Required Riding Class for Saddle Pleasure & Performance Div.**
- LOT 104 Level 2 Horsemanship Class- Required Riding Class for Saddle Pleasure & Performance Div.**
- LOT 105 Level 3 Horsemanship Class- Required Riding Class for Saddle Pleasure and Performance Div.**

PERFORMANCE DIVISION

CLASS – PD

- LOT 106 – Longe Line**
- LOT 107 – Horse or Pony Driving**
- CLASS SP - LOT 108 - 2 & 3 Year Old Snaffle Bit Pleasure- Open to all breeds**
- LOT 109 - Walk/Trot – all ages of riders**
- LOT 110 - Trot Poles - all ages of riders**
- LOT 111 -Poles - all ages of riders**
- LOT 112 - Goat Tying**
- LOT 113 – Draft Horse Driving**
- LOT 114 -Trot Barrels - all ages of riders**
- LOT 115 -Barrels - all ages of riders**
- LOT 116 -Bandana Race (Open)**
- LOT 117-Cowboy Rescue**
- LOT 118-Costume Class**
- LOT 119 -Walk/Trot Bareback (Open)**

HORSE AWARDS

Linda McIntire, Fairfield, will sponsor a trophy for Champion Pony

Orville Brown, Fairfield, will sponsor a trophy for Reserve Champion Pony and Reserve Champion Horse

Rick Spees, Spees Auction Service, Fairfield, will sponsor a trophy for Champion Horse

Korwin Hinshaw, Hinshaw Trailers, Richland, will sponsor a trophy for Champion Horse-Other Breeds

Gary & Deanna Filson, Filson Custom Baling will sponsor a trophy for Reserve Champion Horse-Other Breeds

Harper Brush, Fairfield, will sponsor brushes

The following will be sponsoring gifts:

Linda McIntire, Fairfield

Orville Brown, Fairfield

**Rick Spees Auction Service & Realtor with
Korwin Hinshaw, Hinshaw Trailers, Richland
Reiff Grain & Feed, Fairfield**

Jim Dougherty, Dougherty Barber Shop

**Gary & Deanna Filson, Filson Custom Baling
Ron & Angie Uber, Fairfield**

**R & L Leather, Rex & Lyla Richardson, Selma
Tractor Supply, Fairfield**

Orschlens, Fairfield

Duane & Naomi Forinash, Richland

Redd & Jill Watson, Fairfield

**Don Cummings, Cummings Insurance Agency
Hollander Insurance Inc.**

Dexter Apache Holdings, Inc., Fairfield

**The Jefferson County Mutual Insurance Assoc.,
Fairfield,** will sponsor a hat to exhibitors of champion animals.

**Gifts will be given out for High point Junior,
Intermediate and Senior members.**

4-H AND FFA RABBIT AND POULTRY

**Superintendents: Dennis Thomes, Larry Kientz,
Ben Godwin, Mike Burkhalter**
Rabbit Judge: Kenny Greiner
Poultry Judge: Todd Mallard

1. General rules, regulations and health requirements apply to this department.
2. The Fair Board will provide exhibition hutches and cages.
3. Each exhibitor must furnish own carrying hutches/cages. Carrying cages are not to remain in exhibition building.
4. It is the exhibitor's responsibility to bring the necessary equipment needed to provide protection from the sun for his/her exhibits during the early evening hours.

RABBITS

1. No entry fee.
2. Members may exhibit two (2) entries per class, in each breed, unless they have three (3) or more breeds, then only one (1) entry per class.

Senior Buck/Doe-8 months of age and over or having attained a minimum senior breed weight

Intermediate Buck/Doe-6-8 mos. of age

Junior Buck/Doe-Under 6 mos. of age

SIX CLASS RABBITS

(Large breeds)

DEPARTMENT 16

CLASS: AM (American), CA (Californian), CG (Checkered Giant), CI (Cinnamon), EL (English Lop), FG (Flemish Giant), FL (French Lop), GC (Giant Chinchilla), MI (Mix), NZ (New Zealand), SC (Satin Californian), SSF (Satin Silver Fox)

LOT 100 – Senior Buck – 8 mo. Of age and over or having attained minimum senior breed weight

LOT 101 – Senior Doe – 8 mo. Of age and over or having attained minimum senior breed weight

LOT 102 – Intermediate Buck.....6-8 mo. of age

- LOT 103 – Intermediate Doe.....**6-8 mo. of age
LOT 104 – Junior Buck.....Under 6 mo. of age
LOT 105 – Junior Doe.....Under 6 mo. of age
***LOT 106 – Pre-Jr. Buck.....**Under 3 mo. of age
***LOT 107 – Pre-Jr. Doe.....**Under 3 mo. of age

*Pre-Jr. Classes are to be judged primarily for meat and fur qualities. Also, to teach members how to cull young stock. Not eligible to compete for champion. Strictly an educational class.

FOUR CLASS RABBITS

(Small Breeds)

DEPARTMENT 16

CLASS: DH (Dwarf Hotot), DU (Dutch), EA (English Angora), FW (Florida White), FA (French Angora), HI (Himalayan), HL (Holland Lop), MI (Mix) ML (Mini Lop), MR (Mini Rex), ND (Netherland Dwarf), PO (Polish), RE (Rex), SB (Sable), SA (Satin Angora), S (Silver), SM (Silver Marten)

LOT 108 – Senior Buck – 6 mo. of age and over or having attained minimum senior breed weight

LOT 109 – Senior Doe – 6 mo. of age and over or having attained minimum senior breed weight

LOT 110 – Junior Buck.....Under 6 mo. of age

LOT 111 – Junior DoeUnder 6 mo. of age

MARKET PEN

DEPARTMENT 16

1. Market pen consists of (3) three rabbits.
2. Market pen rabbits cannot be over 90 days of age.
3. Market pen rabbits cannot weigh over five (5) pounds each.

CLASS MP-LOT 1.....Market pen of Three

RABBIT AWARDS

Packwood Lumber, Packwood

will sponsor a trophy for Best of Show Doe

Packwood Trojans 4-H Club, Packwood

will sponsor a trophy for Best of Show Buck.

Packwood Locker, Packwood will sponsor a trophy for Best Market Pen of Rabbits.

The Jefferson County Mutual Insurance Assoc., Fairfield, will sponsor a hat to exhibitors of champion animals.

Trophies will be given to the top Senior, Intermediate, and Junior showmen.

POULTRY DEPARTMENT 13

1. No entry fee.
2. Limit of two (2) entries per class. **With exception of class 113, 114, and 126.**
3. LOTS 115, 116, 117 & 118 will be determined by breed.
4. **NEW IN 2008 – LOT 113, 114, 126, PLEASE NOTE – ONLY 1 ENTRY PER 4-H MEMBER.**
5. **NEW IN 2008 – PLEASE NOTE – LOT 119 THROUGH 124, MUST BE PAIR (1 MALE & 1 FEMALE)**

CLASS – PO

LOT 113 - Production poultry-Pen of 4 layers only. **Birds must be of the same breed.**

LOT 114 - Meat poultry-Pen of 4 all roosters or pullets. No mixed sex

LOT 115 - Exotic, hobby chickens-Small breeds-
1 pair (1 male & 1 female)

LOT 116 - Exotic, hobby chickens-Large breeds-
1 pair (1 male & 1 female)

LOT 117 - Exotic, hobby chickens-Small breeds-
1 single bird

LOT 118 - Exotic, hobby chickens-Large breeds-
1 single bird

LOT 119 - Ducks - 1 pair (1 male and 1 female)

LOT 120 - Geese - 1 pair (1 male and 1 female)

LOT 121 - Turkeys - 1 pair (1 male and 1 female)

LOT 122 - Pigeons

LOT 123 - Pea fowl - (Guineas, Peacocks)

LOT 124 - Game Birds - (Pheasants, Chukar, Quail, and Partridge)

LOT 126 - Return Production - Pen of 4 all hens.
This class is for production birds that were shown the previous year.

Showmanship - Junior

Showmanship - Intermediate

Showmanship - Senior

POULTRY AWARDS

Fairfield Tire & Service, Fairfield will sponsor trophies to the:

- * Best of Show Hen
- * Best of Show Rooster
- * Best of Show Other Poultry

The Jefferson County Mutual Insurance Assoc., Fairfield, will sponsor a hat to exhibitors of champion animals.

Friends of Jefferson County Fair, will sponsor a trophy to the best Pen of Four in the Production class.

Big T Exotics, Dennis Thomes, will sponsor a trophy to the Best Pen of Four in the Meat class.

Trophies will be given to the top Senior, Intermediate, and Junior showmen.

4-H AND FFA DOG OBEDIENCE DEPARTMENT 7

Superintendent: Teree Hellweg

Judge: Ray Holdsworth & Regina Rennjagen

1. No entry fee.
2. General rules, regulations and health requirements apply to this department.
3. Dogs must have a current rabies certificate.
4. This class is open to all properly enrolled members in the Dog Obedience project.
5. All dogs must be on leash or crated while waiting for their class to be called.
6. Any bitch in season may not be shown.
7. Dogs are to be shown by the 4-H member.
8. This is not an AKC sanctioned dog show. However, AKC rules have been used as guidelines.

9. An exhibitor may have only one entry in an obedience class.
10. Dogs may be entered in not more than two obedience classes.

CLASS - DO

LOT 125-Pre-novice "A"

For dogs and exhibitors in their first year of 4-H dog obedience training. Dog must not have finished their third leg toward an AKC, CD degree. Dogs will 1) heel, 2) stand for examination, 3) do figure 8 all on leash, 4) recall on lease, 5) do sits for one minute on leash, 6) Do downs for three minutes on lease.

LOT 126-Pre-novice "B"

For members who have completed one or more years of 4-H dog obedience training. Dogs must not have completed their third leg toward an AKC, CD degree. Dogs must do the same exercises as dogs entered in Class 125.

LOT 127-Novice

Open to dogs that have not completed their third leg toward an AKC, CD degree. Dogs must be able to do the following exercises:1)heel and do figure 8 on lease, 2) stand for examination off leash, 3) heel free, 4)recall off leash, 5)long sit off leash, 6)long down off- leash. Dogs entered in this class may not be entered in Class 125 or 126.

LOT 128-Graduate Novice

Open to dogs that do not have an AKC, CDX degree. Dogs must be able to do the novice exercises (Class 127) PLUS 7) drop on recall, 8) sits for three minutes with handler out of sight, 9) downs for five minutes with the handler out of sight. Dogs entered in this class may not be entered in Class 125 and 126

LOT 129-Open

Dogs will 1)heel off leash, 2)drop on recall, 3)retrieve on the flat, 4)retrieve over the high jump and broad jump, 5)Three minute sits with handler out of sight, 6) five minute downs with handler out of sight. Dogs entered in this class may not be entered in classes 125,126 or 127.

LOT 130-Utility

Dog will do 1) scent discrimination (selection of articles handled by owner) 2) directed retrieve 3) signal exercises (hand signals) 4) directed jumping 5) long stand (minimum of three minutes) for examination. Dogs entered in this class may be entered in class 129 as the only other class.

LOT 131-High Scoring Dog-(no pre-entry fee)

High Scoring Dog from Class 125

High Scoring Dog from Class 126

High Scoring Dog from Classes 127-130

HANDLING

1. The exhibitor is limited to one entry.
2. The handler ages are "by grade"

CLASS - DH

LOT 132 - Junior Novice

Junior Handler (4th, 5th & 6th) in first year of handling training.

LOT 133 - Intermediate Novice

Intermediate handler (7th, 8th & 9th) in first year of handling training.

LOT 134 - Senior Novice

Senior handler (10th, 11th & 12th) in first year of handling training.

LOT 135 - Junior Open

Junior handler (4th, 5th & 6th) in second year of handling training.

LOT 136 - Intermediate Open

Intermediate handler (7th, 8th & 9th) in second year or beyond of handling training.

LOT 137 - Senior Open

Senior handler (10th, 11th & 12th) in second year or beyond of handling training.

LOT 138 - Top Handler (no pre-entry fee) Top Junior

Handler- classes 132 & 135 Top Handler-Classes 133,134,136,137

AGILITY CLASSES

LOT 160 – Small Dog (under 25 lbs.)

LOT 161 – Medium Dog (25-50 lbs.)

LOT 162 – Large Dog (50 lbs. & over)

DOG OBEDIENCE AWARDS

HY-VEE FOOD STORES will sponsor trophies for:

1. High scoring dog from class 125
2. High scoring dog from class 126
3. High scoring dog from classes 127-130
4. Top Junior Handler

Dan's Water Service-Dan & Carolyn Schlicher will sponsor a trophy to the Top Handler.

Agility Champion trophies in each division will be sponsored by the Friends of Jefferson County Fair .

4-H PETS DEPARTMENT 11

Superintendent:

Judge:

1. No entry fee.
2. Limit of 2 entries.
3. General rules and regulations and health rules apply to this department.
4. Exhibitor must furnish own coop or cage.
5. Animals exhibited in Class 11-139 may not be exhibited in any other class.
6. Entries are to be brought to fairgrounds on day of exhibition and taken home after completion of judging.

CLASS PT - LOT 139 Pets

Packwood Trojans 4-H Club, Packwood, will sponsor a trophy to the Best of Show Pets.

**4-H/FFA HOUSEHOLD PET CAT
SHOW
DEPARTMENT 12**

Superintendent: Dennis Thomes & Richard Heald
Judge:

1. No entry fee.
2. General rules, regulations and health requirements apply to this department.
3. Because of susceptibility to disease no kitten under four (4) months of age on the day of the show will be accepted for competition.
4. **HEALTH REQUIREMENTS:** Cats must have current rabies vaccination certificate. No cat or kitten may enter show if there is any (feline) infections or contagious disease in the household within three weeks prior to show date. It is recommended that your cat or kitten is up-to-date on distemper vaccination.
5. All cats and kittens must have nails clipped. Declawed cats may also enter.
6. Cats and kittens will not be judged with ribbons, collars, or other identifying marks on their necks or bodies.
7. It is recommended that you do not feed your cat during show time, feed him well in advance of the show.
8. Judging cages will be provided, but exhibitors must furnish their own cage coverings. Towels may be held to the cage with some kind of clamp or safety pin work well as coverings.

CLASS - PC

KITTENS (4 to 8 months)

LOT 140 - Longhair male kitten

LOT 141 - Shorthair male kitten

LOT 142 - Longhair female kitten

LOT 143 - Shorthair female kitten

ADULTS (8 months & over)

LOT 145 - Longhair male

LOT 146 - Shorthair male

LOT 147 - Longhair female

LOT 148 - Shorthair female

PUREBRED KITTENS (4 to 8 months)
LOT 150 - Longhair male kitten
LOT 151 - Shorthair male kitten
LOT 152 - Longhair female kitten
LOT 153 - Shorthair female kitten
PUREBRED ADULTS (8 months & over)
LOT 155 - Longhair male
LOT 156 - Shorthair male
LOT 157 - Longhair female
LOT 158 - Shorthair female

CAT AWARDS

FAIRFIELD TIRE & SERVICE, FAIRFIELD
Fairfield Tire & Service will award a trophy to the exhibitor of the Best Household Cat.

JEFFERSON COUNTY FAIR QUEEN CONTEST

Coordinator: Kortney Heald - 319-695-3820
Cynthia Post – 641-472-1404

The Jefferson County Fair Queen Contest will be held Wednesday, June 25 at 6:30 p.m. at the Jefferson County Fairgrounds. Entry blanks and rules may be picked up at the Jefferson County Extension Office. **Entry deadline is June 13.**

- Each contestant must be at least 16 years of age and not more than 21 years of age on August 1, 2008.
- Contestants must never have been married or have children.
- The contestant must reside in Jefferson County or an adjoining county if the majority of her activities are in the county she represents.
- The County Fair Queen must be available at the Iowa State Fair Tuesday, August 5th, through the time of the crowning Saturday afternoon August 9th. She will need to provide her own transportation.

**FOR A COMPLETE SET OF RULES FOR
THE STATE FAIR CONTEST CONTACT
COURTNEY HEALD OR CYNTHIA POST.**

LITTLE MISS CONTEST

Coordinators:

Tiffany Warner and Brandi Adam

1. Contest held in conjunction with the Jefferson County Fair Queen contest. Contest will be held Wednesday, June 25 at 6 p.m. on the Jefferson County Fairgrounds. Interviews will be held on Wednesday, June 25 beginning around noon at the Fairfield Public Library Conference Room. Each contestant will have 15 minutes with the judges. Contestant's time will be assigned when registration ends.
2. "Little Miss" contestants must pre-register at the Jefferson County Extension Office. Entry fee of \$15.00 (sponsors optional), and a copy of the contestant's birth certificate must accompany entry form. **DEADLINE IS JUNE 11, 2008, NO EXCEPTIONS. Open to the first 15 registrants who turn in completed application, registration fee and copy of birth certificate into the Extension Office.**
3. Judging will be based on poise, personality, dressing in accordance to theme, overall presentation and response to questions.
4. Any contestant who has performed or competed at a professional level (for monetary gain) in anything other than amateur contests will be considered ineligible.
5. All contestants must be a resident of Jefferson County for at least one year.
6. Contestants may not be older than 8 years of age or younger than 6 years of age by June 1, 2008.
7. Parents and/or chaperones are not allowed in the interview room or the backstage area before or during the contest. Assigned staff will assist contestants if they need help.
8. There will be an on stage presentation and contestants will be asked 1 question at that time.
9. Winner and 1st Runner up will need to be available to help hand out ribbons at assigned shows during the 2008 Jefferson County Fair. Each contestant will receive a participation gift.
10. **The theme this year is "Giddy-Up Cowgirls".** No pageant dresses or swimwear allowed. Contestants are allowed to wear long dresses,

skirts, jeans/shorts or costumes in accordance with the theme. Contestants will be judged on dressing in accordance with the theme during the interview and on stage presentation.

11. Contest is limited to the first 15 registrations turned in to the Extension Office and no less than 5 contestants.

12. Any arguments about final decisions will be grounds for immediate disqualification. Judges decisions are final.

13. Contestants are invited to ride on a float in the Jefferson County Fair Parade on Tuesday, June 24th at 6:30 p.m. Please be to the high school parking lot by 6:00 p.m.

14.. For more information, contact Tiffany Warner at 641-919-1568 or Brandi Adam at 641-662-2847.

JEFFERSON COUNTY FAIR BILL RILEY STATE FAIR TALENT AND SPROUT SHOW

Coordinator: Angie Atwood

The “Bill Riley State Fair Talent and Sprout Show” will be held in conjunction with the Jefferson Co. Fair. The show will be held Wednesday, June 25 at 7:30 p.m. Entries will be accepted only to Angie Atwood by phoning 641-469-6210 or email to angieme@hotmail.com

Rules can be picked up at the Jefferson County Farm Bureau Office in Fairfield. **Entry deadline is June 11.** All entrants must be present by 7:00 p.m. the day of the show.

AWARDS

There will be cash awards given for each division.

Jefferson County Fair Open Classes

OPEN CLASS PET SHOW

Sponsored by: Fairfield and Pekin FFA

Superintendents:

Juston Lamb and Mark Wittrock

1. Entry fee:\$.50 per entry, limit of 2 entries.
2. This class is open to anyone desiring to exhibit their pet/pets.
3. Exhibitors may be of any age.
4. This class will be held Sunday, June 29 at 2:00 P.M. in the Dairy Barn.
5. No diseased animals may be kept on the grounds.
6. ALL ANIMALS must meet the requirements of livestock for exhibitions at county shows and fairs.
7. The Jefferson County Fair Board will not be responsible for any injury to any exhibitor or exhibit.
8. Exhibitors must furnish own cage, coop, etc.
9. Classes will be decided by the judges during the contest.

OPEN CLASS HANDY DEVICES— METAL OR WOOD

Superintendents:

Juston Lamb & Mark Wittrock

Judge:

1. Entry Fee of \$1.00 per entry is due on judging day.
2. Open to residents of Jefferson and adjoining counties.
3. No limit on number of entries.
4. Entries do not have to be constructed during the year. Exhibit may be new, rebuilt or restored at home or school (completed by exhibitor).
5. Exhibits are to be checked-in by 10:00 A.M., Wednesday, June 25.
6. Exhibitor must be present for judging at 10:00 A.M.
7. Exhibits are to be left on the fairgrounds until 10:00 A.M. the last day of the fair.
8. Each exhibit must have an identification tag attached which includes the following: owner's name, intended use, safety qualities, and a picture of the project in use.
9. Exhibits will be displayed outside.
10. 4-H/FFA Division will be judged separately from Adult Open Class Division.
11. The Jefferson County Fair Board will not be responsible for loss or damage to projects exhibited.
12. The following criteria will be used for judging: original idea, usefulness, appearance, and safety.
13. There will be a "MOST FROM THE LEAST" (Recycled Junk) award given to the best project constructed from used materials.

Project Examples: Hay Mover, Feed Bunk, Trailer, Animal Mover, Gadgets, Restored Machinery.

AWARDS

SJ SMITH WELDING AND SUPPLY, KEOKUK:

SJ Smith Welding And Supply will award \$200 in gift certificates for the purchase of tools or supplies. Certificates will be awarded in \$25.00 increments in each category.

OPEN CLASS DIVISION
(EXHIBITED IN THE ACTIVITY BUILDING)

This activity is financially independent of the Jefferson County Fair Board and no money is spent for the Open Class exhibits. It will be supported by those people who exhibit, so its success will depend on the exhibitors. Hopefully 2008 will see additional exhibits. The Open Class Committee welcomes all help and suggestions:

OFFICERS FOR THE 2008 OPEN CLASS DIVISION ARE:

PresidentShawn Plumley
Vice-President.....Joyce Stanley
Secretary.....Jodi Hellweg
Treasurer.....Earla Jean Tedrow
Historian.....Wilma Lewis
Publicity Chairperson.....Shawn Plumley
Fair Board Representative.....Joyce Stanley

CONTRIBUTING MERCHANTS:

- Taco John's
- McDonald's Restaurant
- Pizza Hut
- Subway
- Dairy Bar

IN APPRECIATION OF YOUR SUPPORT:

- Fairfield Lumber
- United Methodist Church
- C.R. Quilts
- O'Grady's Cleaners

RULES AND REGULATIONS

1. Entries not accepted by a professional in said category.
2. We reserve the right to refuse any article that has previously won a blue ribbon.
3. All articles entered must have been completed within the last 12 months and constructed or grown by exhibitor... (From July 2007-July 2008).

4. Any exhibit using any noxious weeds will be disqualified.
5. Diligence will be used to insure safety of articles; but in case of accident, the open class committee or the Jefferson County Fair Board will not be responsible for loss, theft, or damage.
6. Registrations will be made at the Open Class Booth; Tuesday, June 24, at 12:00 p.m. to 6:00 p.m. and Wednesday, June 25, from 7:00 a.m. to 8:30 a.m. **Registration deadline-Wednesday, June 25, at 8:30 a.m. Entry fees are due at the time registrations are made.**
7. Each exhibitor is limited to one entry per number or letter. (Example: In class 201 a person could enter one drop, one rolled or molded, one no bake and one other).
8. Completed entry forms **MUST** be accompanied by **all entry fees.**
9. Entry fees are \$1.00 for each adult entry and \$.50 for each junior & intermediate entry. (Junior Division-11 yrs. old & under) (Intermediate Division-12 through 15 yrs. old)
Please note: Food items will be sold unless exhibitor requests they not be at check-in time. NO ENTRIES ACCEPTED ONCE JUDGING HAS BEGUN.
10. Judging begins at 9:30 a.m. Wednesday, June 25. Open Class department will not be open to the public until 1:00 p.m., Wednesday, June 25.
- 11 Entries will be judged by number.
12. In case of a large number of entries in a class, the class may be divided.
13. In case there is not an entry in a class worthy of 1st place, the prizes will be made accordingly to worth of entry.

14. Premium for 3 places in adult class.

1 st place/Blue.....	\$1.50
2nd place/Red.....	\$1.00
3rd place/White.....	\$.50

15. All premium checks will be void if not cashed by Sept. 1, 2008.

16. Decisions of the judges are final.

17. Food exhibits will be sold Wednesday, June 25, between 1:00 p.m.-4:00 p.m.

18. Entries will be released Sunday, June 29, between 5:00 p.m. and 6:00 p.m. **No entries may be released before 5:00 p.m. Sunday, June 29. You must sign your entries and prizes out in order for them to be released.**

19. Not responsible for articles not picked up by 6:00 p.m., Sunday, June 29.

DIVISION A – ADULTS – ARTS & CRAFTS

Kits will be accepted, but **MUST** be labeled as such.

CLASS 101: Ceramics – (Explain process on 3x5 card)

1. Cold-painted
2. Glazed and fired
3. Antiqued
4. Other than named

CLASS 102: Woodworking – (Explain process on 3x5 card)

1. Home furnishing
 - a. large
 - b. small
2. Novelty
3. Other than named

CLASS 103: Photography-(Must be mounted)

2. Special effect, single any size
- 2a. Scene, single any size
- 2b. Nature, single any size
3. People, single any size
4. Photo Story, a series of camera size
- 5A. Digital Photography, mounted

- 5B. Digital Photography, un-mounted
6. Animals
7. That's Funny, mounted or un-mounted
8. Digital Storybook
9. Computer graphics

CLASS 104: Holiday Ideas

1. Decorations
2. Flat Work
3. Wall Hanging
4. Table Decoration
5. Door Decoration
6. Other than named

CLASS 105: Pictures (Ready to hang)

1. Paintings
 - a. Oil
 - b. Acrylic
 - c. Watercolors
 - d. Chalk
 - e. Painting on wood
2. Drawing
 - a. Pen or Pencil
3. Other than named

CLASS 106: Refinished Furniture

1. Small article (Explain process on 3x5 card)

CLASS 107: Recycled

1. Cloth
2. Metal
3. Plastic
4. Other than named

CLASS 108: Yard Art

1. Metal
2. Wood
3. Stone
4. Other than named

CLASS 109: Baskets

1. Hand Weaving, with handle
2. Hand Weaving, without handle

CLASS 110: Writing

1. Short Stories
2. Poetry

CLASS 111: Scrapbooking

1. Mounted border design & journaling box
2. Steamed page with picture
3. Complete scrapbook

CLASS 112: Felting, etc.

DIVISION B - ADULTS - FOOD

All food items must be placed on white plastic or Styrofoam plates, placed in clear plastic bags, zip locked. Small items such as cookies, fruit, candy, etc., should be in quantities of eight (8). Each entry must be accompanied with two (2) copies of the recipe; recipe should be in recipe sleeve or covered with saran wrap or clear contact.

CLASS 201: Cookies

1. Drop
2. Rolled or molded
3. No bake
4. Other than named

CLASS 202: Bar Cookies

1. Brownies
2. Other than named

CLASS 203: Cakes (Unfrosted)

1. Sponge
2. Angel
3. Chiffon
4. Other than named

CLASS 204: Cakes (Frosted)

1. Chocolate
2. White
3. Decorated
4. Other than named

CLASS 205: Candy

1. Fudge
2. Divinity
3. Other than named

CLASS 206: Bread

1. Loaf of bread
 - a. White
 - b. Other than named
2. Yeast Rolls
 - a. White
 - b. Other than named
3. Sweet Bread
 - a. Cinnamon Rolls
 - b. Holiday Bread
 - c. Muffins
 - d. Other than named
4. Quick Breads
 - a. Coffee Cakes
 - b. Other than named

5. Bread Machine
 - a. White
 - b. Wheat
 - c. Other than named

CLASS 207: Canning

1. Relishes
2. Jams
3. Jellies
4. Vegetables
5. Fruit
6. Pickles
7. Salsa
8. Other Than Named

Must display one regulation size pint, quart or jelly jar with rims on. Jars will be opened at the discretion of the judge. Recipes in recipe sleeves or saran wrap are required.

CLASS 208: Pies

1. Fruit

CLASS 209: Special Diet

1. Fat free
2. Salt free
3. Dietary-Diabetic
4. Other than named

CLASS 210: Other than named

DIVISION C - ADULTS - HANDWORK

All classes must have 3x5 card explaining procedure.

CLASS 301: Crochet

1. Afghans
 - a. Original
 - b. Kit
2. Wearable
 - a. Original
 - b. Kit
3. Flat Work
 - a. Original
 - b. Kit
4. Other than named
 - a. Original
 - b. Kit
 - c. Novelty

CLASS 302: Appliqué

1. Clothing
2. Flatwork
3. Wall hanging

4. Other than named

CLASS 303: Knitted

1. Afghan
 - a. Original
 - b. Kit
2. Wearable
 - a. Original
 - b. Kit
3. Machine Knitting
 - a. Afghan
 - b. Wearable
 - c. Other than named
4. Other than named
 - a. Original
 - b. Kit

CLASS 304: Quilts (All Handwork)

1. King (approx. 106" X 106")
2. Queen (approx. 86" X 100")
3. Double (approx 80" X 95")
4. Twin (approx. 65" X 95")
5. Throw (approx. 75" X 50")
6. Crib (approx. 60" X 45")
7. Wall Quilt
 - a. small (one side less than 76")
 - b. large (one side 76" or more)

CLASS 305: Quilts (Home Machine Quilted)

1. King (approx. 106" X 106")
2. Queen (approx. 86" X 100")
3. Double (approx 80" X 95")
4. Twin (approx. 65" X 95")
5. Throw (approx. 75" X 50")
6. Crib (approx. 60" X 45")
7. Wall Quilt
 - a. small (one side less than 76")
 - b. large (one side 76" or more)

CLASS 306: QUILTS (Combined hand and home machine work)

1. King (approx. 106" X 106")
2. Queen (approx. 86" X 100")
3. Double (approx 80" X 95")
4. Twin (approx. 65" X 95")
5. Throw (approx. 75" X 50")
6. Crib (approx. 60" X 45")
7. Wall Quilt
 - a. small (one side less than 76")
 - b. large (one side 76" or more)

CLASS 307: QUILTS (Combined Hand or machine sewn/professional machine quilting)

1. King (approx. 106" X 106")
2. Queen (approx. 86" X 100")
3. Double (approx 80" X 95")
4. Twin (approx. 65" X 95")
5. Throw (approx. 75" X 50")
6. Crib (approx. 60" X 45")
7. Wall Quilt
 - a. small (one side less than 76")
 - b. large (one side 76" or more)

CLASS 308: COMFORTER OR QUILT (Tied)

1. King (approx. 106" X 106")
2. Queen (approx. 86" X 100")
3. Double (approx 80" X 95")
4. Twin (approx. 65" X 95")
5. Throw (approx. 75" X 50")
6. Crib (approx. 60" X 45")

CLASS 309: PILLOWS

1. Original
 - a. Quilted
 - b. Decorated
 - c. Other than named
2. Kit
 - a. Quilted
 - b. Decorated
 - c. Other than named

CLASS 310: Embroidery

1. Long Stitch
2. Wall Hanging
3. Stitchery (Dresser scarves, etc.)
4. Cross Stitch
5. Counted Cross Stitches
6. Chicken Scratching
7. Dimensional Embroidery
8. Ribbon Work
9. Other than named

CLASS 311: Decorated Clothing

1. Counted Cross Stitch
2. Other application (embroidery, appliqué, etc.)
3. Other than named

CLASS 312: Sewing

1. Casual
2. Dress

3. Tailoring
4. Decorated Stitchery
5. Other than named

CLASS 313: Plastic Canvas Projects

CLASS 314: Place Setting - Name Theme

CLASS 315: Foundation or Paper Piecing

1. Clothing
2. Flat Work
3. Wall Quilt

CLASS 316: Rugs

CLASS 317: Needlepoint

1. Framed
2. Flat Work
3. Wall Hanging
4. Other than named

CLASS 318: Beading

1. Single
2. Set article
3. Cloth

CLASS 319: Other than named

DIVISION D - ADULTS - FLOWERS

CLASS 401: Cut single flower

1. Rose
2. Gladiolus
3. Other than named

CLASS 402: Arrangements

1. Fresh cut
2. Artificial or Dried
3. Wild Flowers
4. Other than named

CLASS 403: Potted Plants

DIVISION E – FRUITS AND VEGETABLES

(name variety)

CLASS 501:

1. Vegetable Display (5 specimens)
2. One large vegetable
3. Plate of 5 Vegetables
4. Novelty Vegetable (1 only)
5. Fruit Display (5 specimens)
6. One large fruit
7. Plate of 5 fruits
8. Novelty Fruit (1 only)

JUNIOR DIVISION AND INTERMEDIATE DIVISION

**All classes listed under the adults are available.
Use 6- as a prefix for Junior entries and 9- as a
prefix for Intermediate entries.**

DIVISION F – JUNIOR DIVISION

**CLASS 660 Junior 960 Intermediate
School or Organizational Project**

**CLASS 661 Junior 961 Intermediate
Independent Project**

**CLASS 662 Junior 962 Intermediate
Models or Kits**

**CLASS 615 Junior 915 Intermediate
Art Drawing**

DIVISION G - INTERMEDIATE DIVISION (Ages 12 through 15 years)

DIVISION H – AGRICULTURE PRODUCTS

These must be grown by exhibitor.

CLASS 801: Corn

1. Best 6 ears of 2007
2. Best single ear of 2007
3. Best ½ gallon shelled of 2007
4. Longest ear of 2007

CLASS 802: Winter Wheat

1. Best ½ gallon of 2007

CLASS 803: Oats

1. Best ½ gallon of 2007

CLASS 804: Soybeans

1. Best ½ gallon of 2007

CLASS 805: Novelty Corn

1. Best 6 ears of popcorn in 2007
2. Best 6 ears of Indian corn in 2007

DIVISION I - CARE FACILITY AND HANDICAP

No entry fee and no premium money will be given.
Each participant will receive a ribbon. Any type of
entry will be accepted. Please no “For Sale” signs.